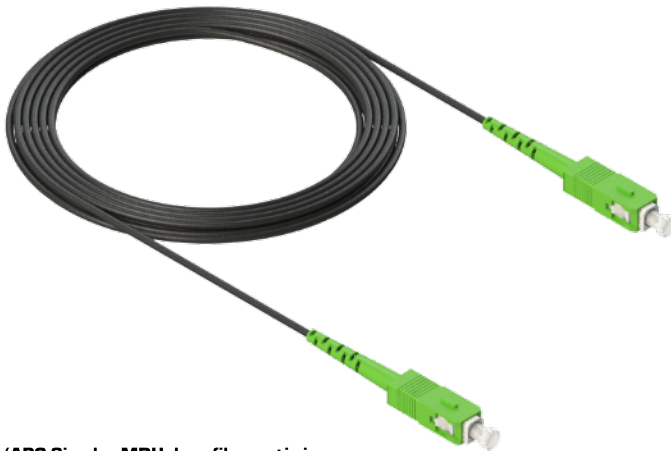


MDU DROP FIBER OPTIC JUMPER

FJ-XX-SCA-SCA-XXXXF-X-M-X
INDOOR OUTDOOR CABLE ASSEMBLIES

The MEXFO SERV® Drop Fiber Optic Jumpers are engineered for the complete execution of today's FTTH application needs. We have a large stock of cables and connectors for a fast turnaround on custom assemblies.

These factory-based assemblies are machine polished to ensure excellence in performance intermateability and durability. All jumpers are video inspected to ensure connector end-faces are free of defects and contamination. Insertion loss is tested using standard-based testing procedures.



SC/APC Simplex MDU drop fiber optic jumper

APPLICATIONS

- Telecom
- Data transfer
- CATV
- Indoor & outdoor applications
- FTTX

GENERAL CHARACTERISTICS

- Custom lengths ranging from 5 ft up to 500 ft (for special lengths please contact our sales team).
- Serial number for each jumper
- Insertion loss ≤ 0.3 dB
- SC/APC polish connectors
- Return loss ≥ 60 dB (APC)
- 3 & 4.8 mm outer diameter available configurations.
- Bend insensitive.
- Flame retardant cable.

STANDARDS

- **RoHS** Compliant.

Note: Illustrative images



Many of our fiber optic cable assemblies are highly configurable. If you don't see what you are looking for or have questions about our ordering matrix contained on this spec sheet, please email us info@mexfoserv.com



SPECIFICATIONS

CONNECTOR SPECIFICATIONS	
CONNECTOR TYPE	SC
CONNECTOR POLISHING	APC (ANGLED PHYSICAL CONTACT)
Standard body color	Green
3 mm & 4.8 mm boot color	Green
*Max. Insertion Loss (1310nm & 1550nm)	≤ 0.30 dB
*Min. Return Loss (1310nm & 1550nm)	≥ 60 dB
Ferrule Type	Ceramic
Ferrule Diameter	2.5mm
Operational Temperature	-40°C ~ 75°C [-40°F ~ 167°F]
CABLE SPECIFICATIONS	
Operational Temperature	-20°C ~ 60°C [-4°F ~ 158°F]
Installation Temperature	-10°C ~ 50°C [14°F ~ 122°F]
Max.attn. on Cable	0.4{1310nm} / 0.3{1550nm} [dB/Km]
Protections	Flame Retardant UV Resistant
Maximum Crush Resistance (3.0 mm Cable)	350N/100mm
Maximum Crush Resistance (4.8 mm Cable)	1000 N/100mm

DROP CABLES

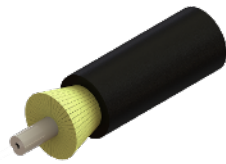


Fig. 1 3.0 mm & 4.8 mm MDU CABLE

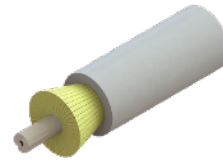
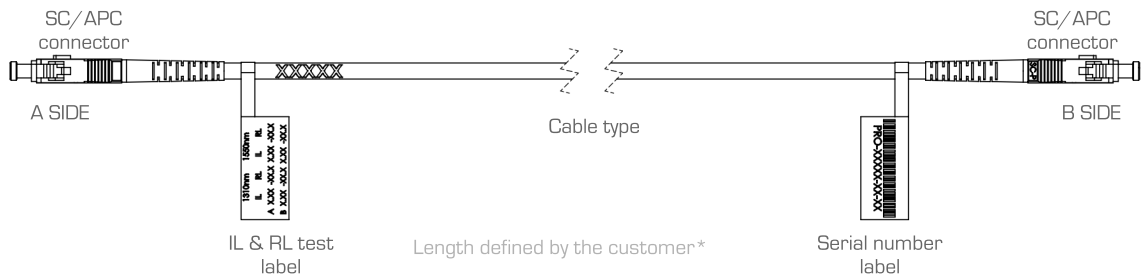


Fig. 2 3.0 mm & 4.8 mm MDU CABLE WHITE

DIMENSIONS



Illustrative image

Notes: * Jumper length tolerances are the following:

L ≥ 5 ft up to 25 ft; + 6 in / - 0.0 in

L ≥ 26 ft up to 500 FT; + 1% / - 0.0

The label of serial/part number and the IL & RL test label will always be printed and placed at opposite ends.



INDIVIDUAL PACKAGING

PACKAGING SPECIFICATIONS							
Length	Individual zipper bag (3 mm)	Individual zipper bag (4.8 mm)	3" X 4" 10000284 Label	Master box	Quantity of zipper bags into master box (3 mm)	Quantity of zipper bags into master box (4.8 mm)	Master boxes per pallet
5 - 25 FT	1 (1141)	1 (1141)	2	CC-30-25-25-ECT42 30 x 25 x 25 cm (11.81 x 9.84 x 9.84") carton master box	28 pcs	13 pcs	60
26 - 125 FT	1 (1141)	1 (1119)	2		12 pcs	7 pcs	
126 - 200 FT	1 (1119)	1 (1119)	2		10 pcs	6 pcs	
201 - 350 FT	1 (1119)	1 (S-12256)	2		7 pcs	5 pcs	
351 - 500 FT	1 (S-12256)	1 (S-12256)	2		5 pcs	4 pcs	

1141: 20 x 20 cm (8 x 8") / **1119:** 25 x 30 cm (10 x 12") / **S-12256:** 30 x 45 cm (12" x 18") Resealable plastic bag.
 Note: Every master box has a 3" X 4" 10000284 Label

LABELING INFORMATION



Individual label



Group label

Notes:

1. Individual label is applied on the individual bag for each assembly. Group label is applied on to the master box that contains several assemblies.
2. Geometry and inspections reports are stored digitally and can be shared if needed. Printed reports will have an extra cost, please ask your sales representative for a printed report.
3. All assemblies are shipped in plastic bags, inside a box, if a reel is needed it will have an extra cost, please ask your sales representative for this option

PALLET PACKAGING

PALLET SPECIFICATIONS	
Pallet dimensions	Standard pallet (1113-CERT) 1.0 x 1.2 meters (40 x 48")
CC-30-25-25-ECT42 master box maximum capacity	5 beds with 12 boxes in each bed, 60 CC-30-25-25-ECT42 boxes in total on the pallet, protected by stretch wrap, strapping and corner protectors.

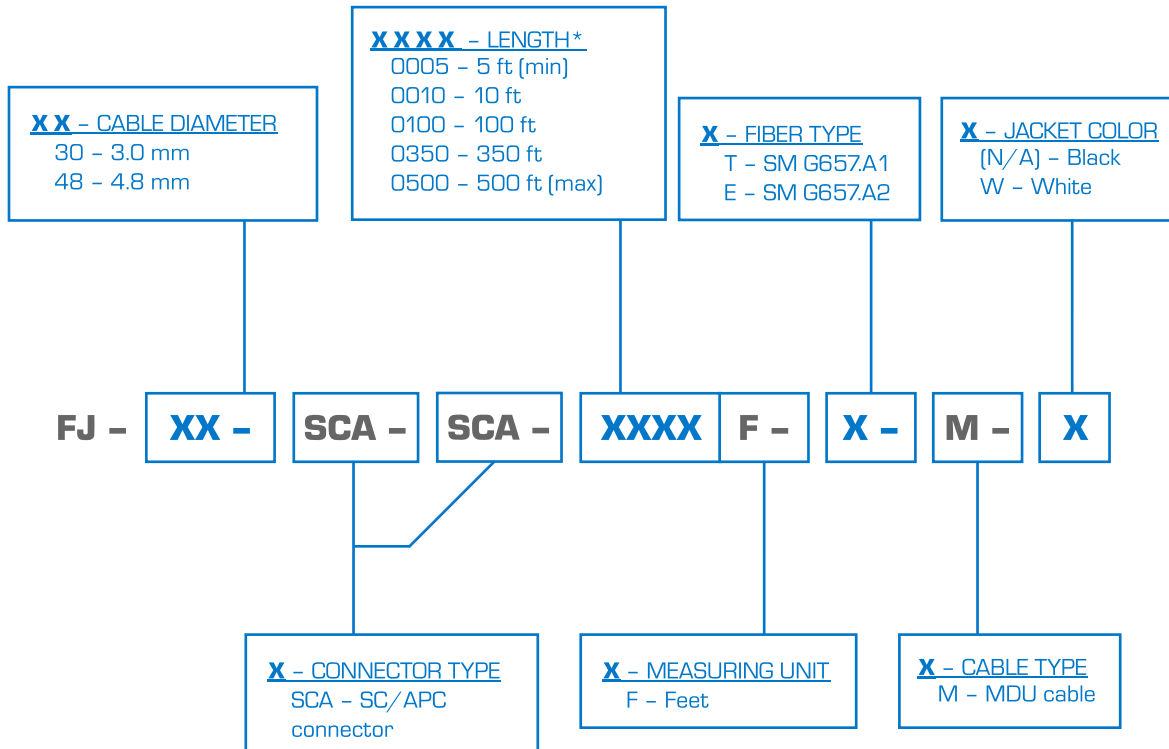


Fig. 3 Pallet packaging



Fig. 4 CC-30-25-25-ECT42



ORDERING MATRIX
MDU DROP FIBER OPTIC JUMPER


Note: MEXFO SERV® MDU drop fiber optic jumper is available in various standard lengths please ask your sales representative for our current stock.

