



Toneable Micro Flat Drop Cable

FOSPC-001-X-TMCFDL-FT0C0-EX / 1 Fiber

Applications



* Indoor



Outdoor



Aerial



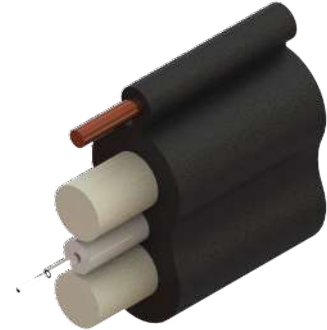
Duct Installation



Direct-buried



Self-supporting



Protections



UV Resistant



Water Blocking



Crush Resistant



* Flame Retardant



* LSZH Cable



* Low Smoke Emission

TONEABLE MICRO FLAT DROP UV RESISTANT CABLE 900UM LSZH TIGHT BUFFER 01F G657.A1 FIBER FT

Note: Protections marked with "*" are only applicable for the tight buffer in the 900um configurations. The rest are only applicable for the outer jacket.

Description

Waveoptics® Toneable Micro Flat Drop Cable is designed for self-supporting, direct-buried, and duct installations. It is ideal for drop applications, offering ease of access and straightforward installation. Its compact and robust design facilitates handling and reduces transportation and storage costs. It is available exclusively in a 900-micron tight-buffered fiber configuration (1 fiber).

The cable features a PE single jacket with additives, making it resistant, durable, and easy to strip, while providing superior protection against UV radiation, fungi, abrasion, and other environmental factors.

It includes two parallel dielectric strength members that offer exceptional crush resistance. The FRP strength members are coated with EAA for improved adherence.

Additionally, the copper toning conductor enables effortless detection in direct-buried installations.

Quality

Waveoptics® is a ISO-9001:2015 certified company.

We meet or exceed the following international standards:

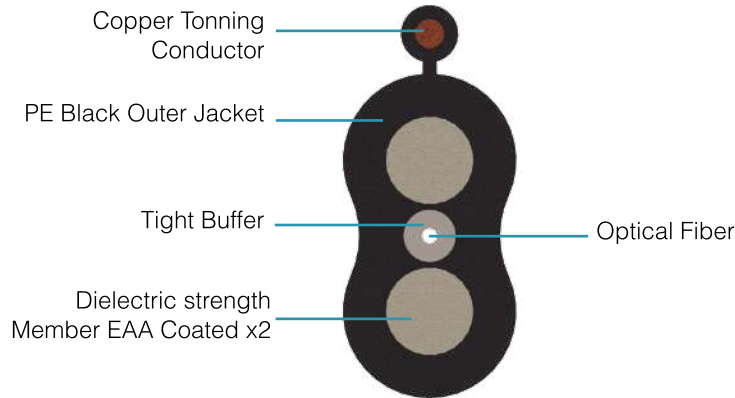
- Telcordia GR-20: Generic requirements for optical fiber and optical fiber cable.
- IEC 60794: Basic requirements for optical fiber and cable elements.
- ANSI/CEA S-110-717: Standard for optical fiber drop cable.


Each Waveoptics® cable meets the highest quality standards in the industry and contains a compliance certificate in which the performed tests in our quality laboratory are physically attached.

TECHNICAL DATA SHEET INDOOR - OUTDOOR CABLE

FOSPC-001-X-TMCFDL-FT0C0-EX / 1 Fiber

Dimensions & Properties



Design	
Fiber Count	1
Fiber Color Code (900um Tight Buffer Configuration)	
Dielectric Strength Member Material / Diameter	EAA Coated FRP / 1.35 mm
Toning Conductor	24 AWG Copper Wire
Outer Jacket Material	LLDPE
Tight Buffer Material (900 um Configuration)	LSZH
Drum Length	2,500 ft (±5%)
Temperature Range	
Operation	-40°C to 70°C (-40° F to 158° F)
Installation	-30°C to 70°C (-22° F to 158° F)
Storage / Transport	-40°C to 70°C (-40° F to 158° F)
Mechanical Properties	
Crush Resistance (Short-Term / Long-Term)	2,200 N/100 mm / 1,100 N/100 mm
Minimum Bend Radius (Operation / Installation)	10 x OD / 20 x OD

Note: Waveoptics® recommends storing cable in a proper temperature environment prior to installation to allow the cable temperature to meet installation temperature range specifications for best installation results.

Folio EI-1004-01-EN

Last Review 8/16/2024

www.waveoptics.net

info@waveoptics.net

TECHNICAL DATA SHEET INDOOR - OUTDOOR CABLE

FOSPC-001-X-TMCFDL-FT0C0-EX / 1 Fiber

Dimensions & Properties

Cable Configuration	Fiber Count	Tight Buffer Material	Cable Weight (kg/km)(lb/kft) (±10%)	Tensile Strength (N)(lbf) Long-Term/ Short-Term	Nominal Outer Dimensions (mm)(in)	Dielectric Strength Member Diameter (mm)(in)
Tight buffer (900um)	1	LSZH	19.5 (12.7)	210 / 700 (47 / 157)	6.6 x 3.0 (0.26 x 0.12)	1.35 (0.053)

Printed Information on Outer Jacket

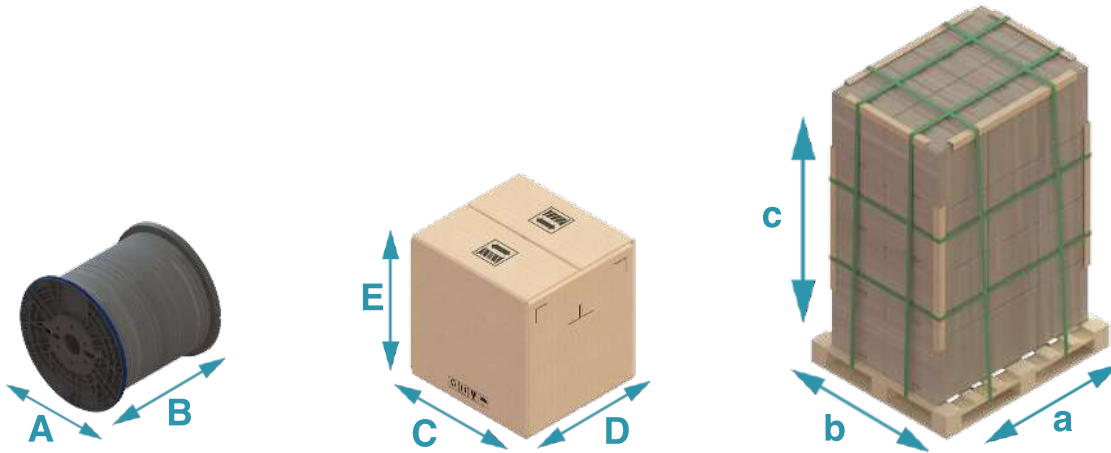
= /XXXX/FT==/MONTH//YEAR/ WAVEOPTICS/ OPTICAL CABLE ==  == /LOT#/ TMCFD==/900 um/==/FIBER COUNT/= = /FIBER TYPE/=

- Printed in white and resistant to physical tests on marking
- Marking interval: every 2 feet 0 to + 1%

TECHNICAL DATA SHEET INDOOR-OUTDOOR CABLE

FOSPC-001-X-TMCFDL-FT0C0-EX / 1 Fiber

Drum Dimensions and Pallet Packaging Information



Note: Reference Images

Drum Length (ft)(m) (±5%)	Fiber Count	A (mm)(in) (±5%)	B (mm)(in) (±5%)	Box Dimensions			Total Packaging(±5%)			
				C (mm)(in) (±5%)	D (mm)(in) (±5%)	E (mm)(in) (±5%)	Pallet capacity	a (mm)(in)	b (mm)(in)	c (mm)(in)
2,500 (762)	1	365 (14)	339 (13)	382 (15)	354 (14)	377 (15)	24	1,200 (47)	1,000 (39)	1,648 (65)

Note 1: Please contact your sales agent for higher fiber counts or different drum lengths available.

Note 2: All documentation included in each drum of cable is in English, if a different language is needed, please contact your sales agent.

Note 3: Drums should be stored indoors avoiding environmental exposures such as: sunlight, humidity, precipitation or dust. Therefore, FONCS does not guarantee the drum performance once exposed to any type of environmental exposure.

All drums include:*

1. Drum handling instructions
2. Test report certificate
3. Product description (weight, dimensions, lot and part number)
4. End cable marking
5. Both ends include end caps to protect against humidity

TECHNICAL DATA SHEET INDOOR - OUTDOOR CABLE

FOSPC-001-X-TMCFDL-FT0C0-EX / 1 Fiber

Transmission Performance by Fiber Type

Fiber Type	Single Mode		
Waveoptics® Fiber Type	G657.A1	G657.A2	G657.B3
Waveoptics® Fiber Code	T	E	N
Wavelength (nm)	1310 / 1550		
Max.attn. (dB/km) (1)	0.36/0.25	0.35/0.21	0.40/0.30
Cable Marking Specifications	G657.A1	G657.A2	G657.B3
Notes: (1) Maximum attenuation after cabling process			

Part Number Configuration

FOSPC-001-X-TMCFDL-FT0C0-EX

Fiber Count

01- 1 Fiber

Waveoptics® Fiber Type

T - SM G657.A1
 E - SM G657.A2
 N - SM G657.B3

Tight buffer material / Fiber configuration

L - LSZH / 900um

Drum Length

0C0 - 2,500 ft

Optical Cable Compliance

EX - Waveoptics® Slim Standard

Note: please contact your Waveoptics® distributor if you need any additional compliance or if you have questions about the part number configuration.

Folio EI-1004-01-EN

Last Review 8/16/2024

www.waveoptics.net

info@waveoptics.net