

MECHANICAL SPLICE

MSK-50 ACCESORIES



CHARACTERISTICS

- Fast and easy splicing of 250-250um, 250-900um, 900-900um SM/MM fibers.
- Installation time less than 1 minute.
- Necessary tools are provided as standard.
- Compatible with FUSIONGUARD IN-LINE FIBER CABLE REPAIR SPLICE CLOSURE (FCLO-HO-01E-1-PFMS-XXX configuration).

GENERAL

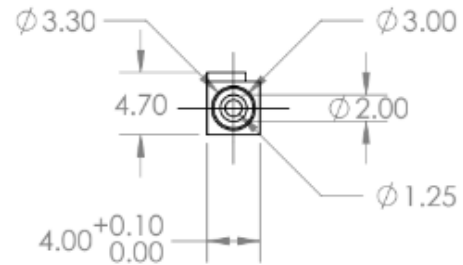
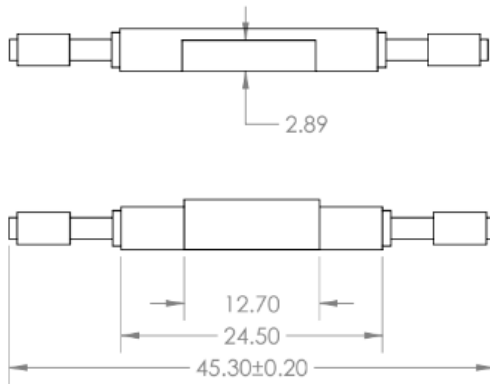
Mechanical Splice is used to connect two fibers by using index matching gel in the center of the mechanical splice to ensure good insertion and return loss.

The two fibers are inserted into the mechanical splice and then held in position by clamping parts of the mechanical splice.

TECHNICAL INFORMATION

MECHANICAL SPLICE	
Applicable Fiber Diameter	250um & 900um
Applicable Fiber Mode	SM & MM
Fiber Cladding Diameter	125um (G652D & G657A)
Insertion Loss	≤0.2 dB (1310/1490/1550nm)
Return loss	≥50dB
Tensile force (N)	>5N for 250 um bare fiber; >8N for 900 um bare fiber
Dimension	45*4.0*4.7mm
Working Temperature	-40°C~+85°C
Required Tool	Cutting Jig (Provide 1pc for each mechanical splice)

DIMENSIONS



Note: Dimensions in mm

KIT INCLUDED

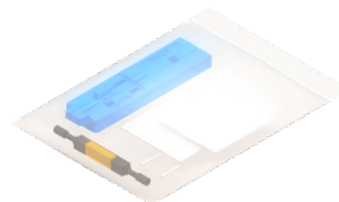
MSK-50



MSK-50		
DESCRIPTION	QTY	UNIT
MECHANICAL SPLICE	1	PIECE
DUST FREE PAPERS	2	PIECES
CUTTING JIG	1	PIECE
SLEEVES FOR 250 UM FIBER	2	PIECES

PACKAGING

Each mechanical splice kit is packed in its individual bag.



MOQ's



Qty. per box	A in/(mm)	B in/(mm)	C in/(mm)	Approx Weigh lb/(kg)
50 pieces	1.45" (37)	9.44" (240)	8.07" (205)	.55 (.250)

LABEL SPECIFICATIONS




FUSIONGUARD www.fusionguard.com
info@fusionguard.com

PRODUCT CODE: MSK-50

DESCRIPTION:
MECHANICAL SPLICE KIT 50 PIECES

QTY: 50 PIECES



MSK-50

