

FIBER OPTIC NETWORK SOLUTIONS

INSTALLATION MANUAL

FAST ACCESS JUMPER

GENERAL

This document is intended to provide a step-by-step guide for installing the product Fast Access Jumper.

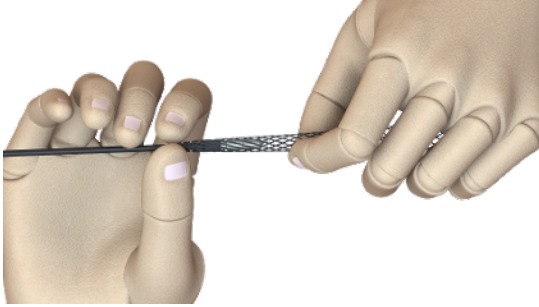
The Fast Access Jumper is equipped with a Nylon Pulling Eye that enhances it's pulling strength.



TABLE OF CONTENTS

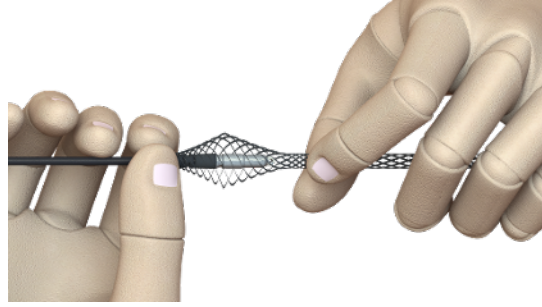
How to install the Pulling Eye?	3 - 4
Fast Access Connector	4 - 5
• Housing Assembly	

PULLING EYE INSTALLATION



STEP 1

Slide the Pulling Eye over the Fast Access Jumper



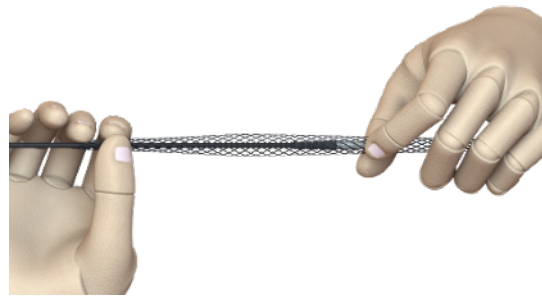
STEP 2

Hold the Pulling Eye with the hand on the cable, tighten up the Pulling Eye, and push it to the side of the cable.



STEP 3

Continue moving forward to the end of the cable.



STEP 4

When the metal cap reaches the end of the Pulling Eye, tight it to improve its performance.

PULLING EYE INSTALLATION



STEP 5

Insert a wire into the Anti-torsion component.



STEP 6

Ready for field installation.

FAST ACCESS CONNECTOR

HOUSING ASSEMBLY



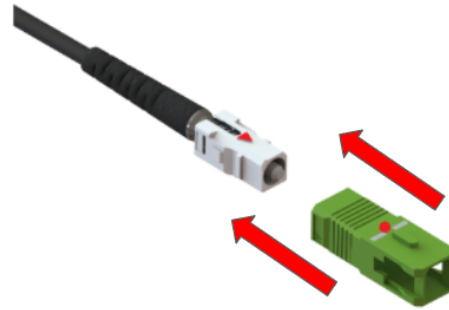
STEP 1

Remove the metal traction cap from the Fast Access Jumper



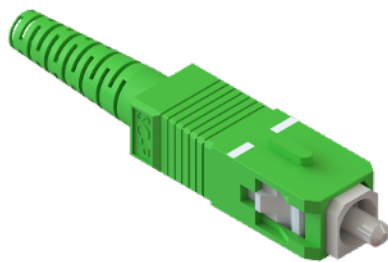
STEP 2

Align the Red mark on the Body with the Red mark on the bottom of the ferrule. To confirm that the assembly is correct, you should hear a "click" sound.



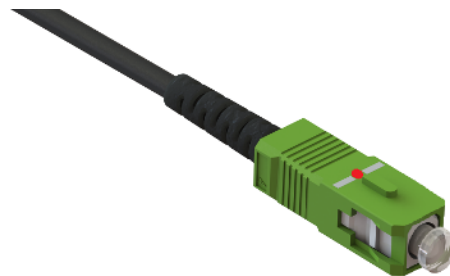
STEP 3

Align the Red mark on the Body with the Red mark on the Housing.



STEP 4

After adding the housing, make sure to clean the ferrule



STEP 5

Install the Dust Cap