



# Central MDU Armored Cable Dry / Simplex FOSPC-001-N-SJSASUT8-FTB14-US / 1 Fiber

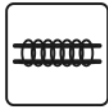
## Applications



Outdoor



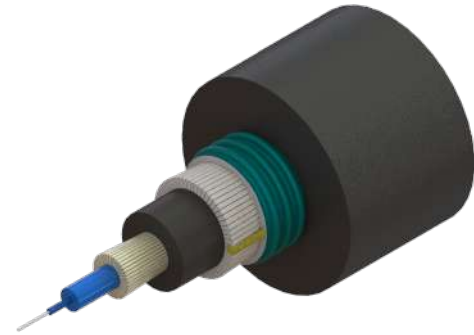
Duct Installation



Lashed



Direct-buried



CENTRAL MDU ARMORED CABLE  
DRY 1F G657.B3 FIBER FT

## Protections



UV Resistant



Water Blocking



Crush Resistant



Rodent Deterrent



Impact Resistant



\*FRTPU  
Cable



\*Hydrolysis  
Resistant

Note: Protections marked with "\*" are only applicable for the inner jacket.  
The rest are only applicable for the outer jacket.

## Description

Waveoptics® Central MDU Armored Cable Dry is designed for direct-buried installation, as well as for duct and aerial (lashed) installation for indoor / outdoor applications. Simplifying the transition from the outdoor environment to an indoor Optical Network Terminal (ONT).

Small sub-unit diameter and bend radius that allow an easy installation in space-constrained areas. Dry water blocking glass yarn technology allows a cleaner and quicker installation as well as a cost-friendly cable preparation.

PE single jacket with additives makes a resistant and durable cable, providing superior protection against UV radiation, fungus, abrasion and other environmental factors.

Two ripcords ensure a quick fiber access.

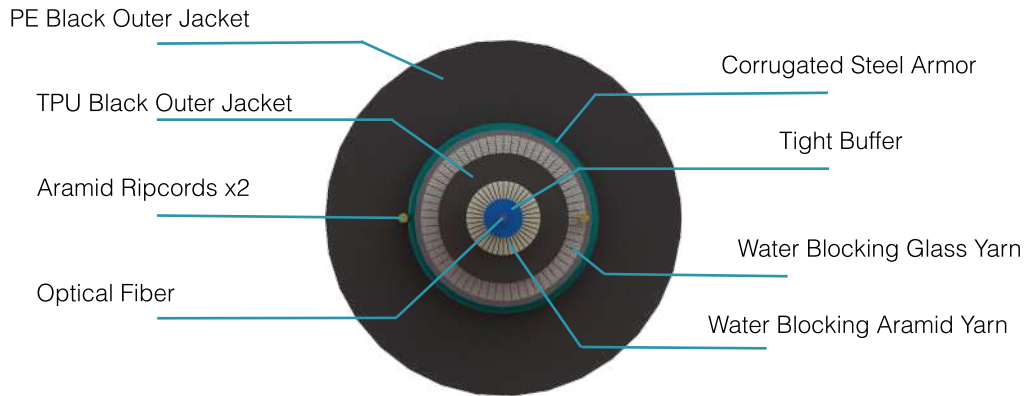
Corrugated steel armor makes a rugged cable rodent deterrent and offers exceptional performance against compression.

# TECHNICAL DATA SHEET

## OUTDOOR CABLE

FOSPC-001-N-SJSASUT8-FTB14-US / 1 Fiber

### Dimensions & Properties



Design	
Fiber per Tube	1
Fiber Color Code / Semi - Tight Buffer Color Code	<b>1</b>
Semi-Tight Buffer Material / Diameter	LSZH / 0.9 mm(0.04 in) (± 50 µm)
Sub-unit material	FRTPU with UV protection
Dielectric Peripheral Strength Member	Water Blocking Glass Yarn
Outer Jacket Material / Thickness	Polyethylene / 1.9 mm (0.06 in)
Drum Length	6,500 ft (±5%)
Temperature Range	
Operation	-40°C to 70°C (-40° F to 158° F)
Installation	-30°C to 70°C (-22° F to 158° F)
Storage / Transport	-40°C to 70°C (-40° F to 158° F)
Mechanical Properties	
Crush Resistance (Short-Term / Long-Term)	2,200 N/100 mm / 1,100 N/100 mm
Minimum Bend Radius (Operation / Installation)	10 x OD / 20 x OD

Note: Waveoptics® recommends storing cable in a proper temperature environment prior to installation to allow the cable temperature to meet installation temperature range specifications for best installation results.

**Folio PE-656-01-EN**

**Last Review 10/25/2023**

# TECHNICAL DATA SHEET


## OUTDOOR CABLE

FOSPC-001-N-SJSASUT8-FTB14-US / 1 Fiber

### Dimensions & Properties

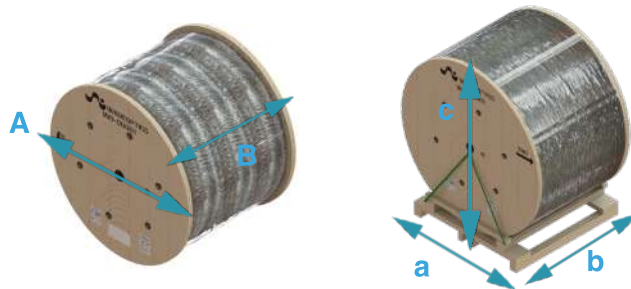
Fiber Count	Cable Weight (kg/km) (lb/kft) (±10%)	Tensile Strength (N) (lbf) Long-Term / Short-Term	Nominal Outer Diameter (mm) (in) (±5%)	Sub-unit outer diameter (mm) (in) (±5%)
1	79 (53)	445 / 1,335 (100 / 300)	8.2 (0.32)	3 (0.12)

### Printed Information on Outer Jacket

==/MONTH//YEAR/WAVEOPTICS OPTICAL CABLE==SJSAS==UT==DRY==82==  ==/FIBER TYPE//FIBER COUNT//FEET\*/FT== /LOT# /

- Printed in white and resistant to physical tests on marking
- Marking interval: every 2 feet + 1%
- The marking can be changed according to customer requirements

### Drum Dimensions and Pallet Packaging Information



Drum Length (ft) (m) (±5%)	Fiber Count	A (mm) (in) (±5%)	B (mm) (in) (±5%)	Drum and Pallet Total Weight (kg) (lb) (±10%)	Total Packaging (±5%)		
					a (mm) (in)	b (mm) (in)	c (mm) (in)
6,500 (1,981)	1	1,000 (39)	700 (28)	243.5 (536.8)	965 (38)	914 (36)	1,121 (44)

Note 1: Please contact your sales agent for higher fiber counts or different drum lengths available.

Note 2: All documentation included in each drum of cable is in English, if a different language is needed, please contact your sales agent.

Note 3: FONCS recommends storing the reel in a suitable place avoiding exposure to humidity, rain and/or any type of demanding environmental exposure.

#### All drums include:\*

1. Drum handling instructions
2. Test report certificate
3. Product description (weight, dimensions, lot and part number)

Folio PE-656-01-EN

Last Review 10/25/2023

[www.waveoptics.net](http://www.waveoptics.net)

[info@waveoptics.net](mailto:info@waveoptics.net)

# TECHNICAL DATA SHEET OUTDOOR CABLE

FOSPC-001-N-SJSASUT8-FTB14-US / 1 Fiber

## Transmission Performance by Fiber Type

Fiber Type	Single Mode
Waveoptics® Fiber Type	SM G657.B3
Waveoptics® Fiber Code	N
OFS® Fiber Type	-
OFS® Fiber Code	-
Wavelength (nm)	1310 / 1550
Max.attn. (dB/km) (1)	0.40/0.3
Cable Marking Specifications	SM G657.A1
Notes: (1) Maximum attenuation after cabling process	

## Part Number Configuration

# FOSPC-001-N-SJSASUT8-FTB14-US

### Waveoptics® Fiber Type

N - SM G657.B3

### Reel Length

B14 - MDU - Black Jacket

### Optical Cable Compliance

US - Waveoptics® Standard

Note: please contact your Waveoptics® distributor if you need any additional compliance or if you have questions about the part number configuration.

Folio PE-656-01-EN

Last Review 10/25/2023

[www.waveoptics.net](http://www.waveoptics.net)

[info@waveoptics.net](mailto:info@waveoptics.net)