

INSTALLATION MANUAL

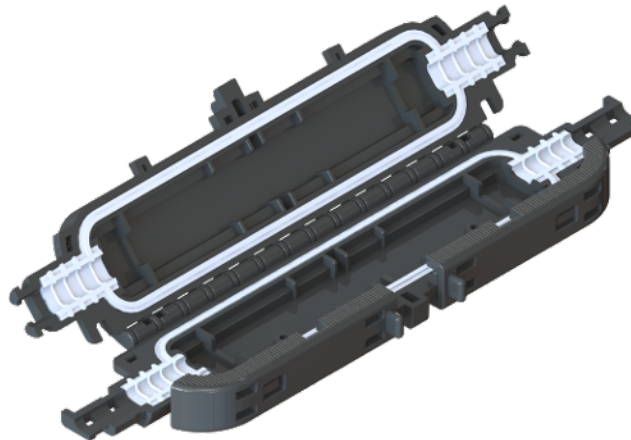
IN-LINE FIBER FLAT DROP CABLE REPAIR SPLICE CLOSURE

GENERAL

This document will serve as a guidance for installation method of the product "IN-LINE FIBER FLAT DROP CABLE REPAIR SPLICE CLOSURE".

List of products that this manual covers:

- **FCLO-HO-01E-1-PFMS-FD:** HORIZONTAL 1F, 1 MECH SPLICE PRELOADED FD.
- **FCLO-HO-01E-1-EMP-FD:** HORIZONTAL 1F, EMPTY CONFIGURATION FD.



INSTALLATION MANUAL

IN-LINE FIBER FLAT DROP CABLE REPAIR SPLICE CLOSURE

INDEX

MECHANICAL SPLICE KIT	PAGE 03
EMPTY CONFIGURATION	PAGE 04
KIT ASSEMBLY	
FCLO-HO-01E-1-PFMS-FD	PAGE 05
FCLO-HO-01E-1-EMP-FD	PAGE 14
INSTALLATION METHODS	
AERIAL INSTALLATION	PAGE 15
WALL MOUNT INSTALLATION	PAGE 16

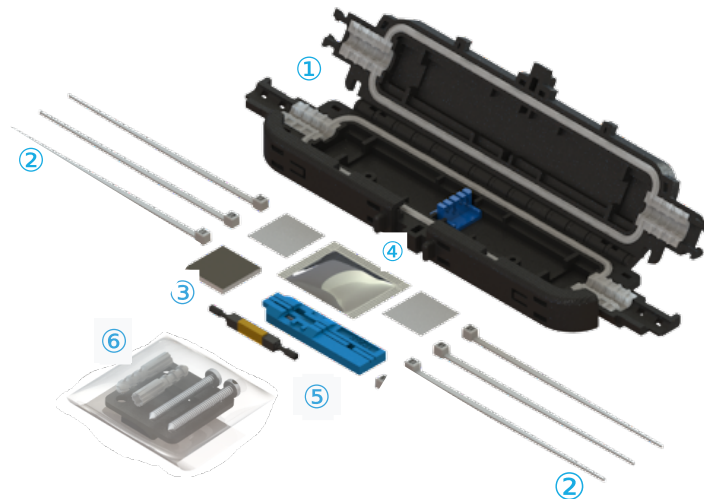
INSTALLATION MANUAL

IN-LINE FIBER FLAT DROP CABLE REPAIR SPLICE CLOSURE

The "IN-LINE FIBER FLAT DROP CABLE REPAIR SPLICE CLOSURE" by FUSIONGUARD® is preloaded with:

FCLO-HO-01E-1-PFMS-FD			
NUMBER	CODE	DESCRIPTION	QTY
1	FCLO-HO-01E-FD	HORIZONTAL 1F SPLICE CLOSURE FD	1
2	EQ-10025BK	BLACK NYLON ZIP TIES UV RESISTANT	6
3	FCLO-CV-20MM	VULCANIZING TAPE 20 MM X 20 MM X 2 MM	1
4	SG-5G	SILICONE GREASE BAG 5 GR	1
5	L925B-KIT	MECHANICAL SPLICE KIT	1
6	FCLO-HO-01E-WKIT	WALL MOUNTING KIT SPLICE CLOSURE	1

With our kit, any drop cable can be repaired quicker and easier than a complete last mile installation replacement.



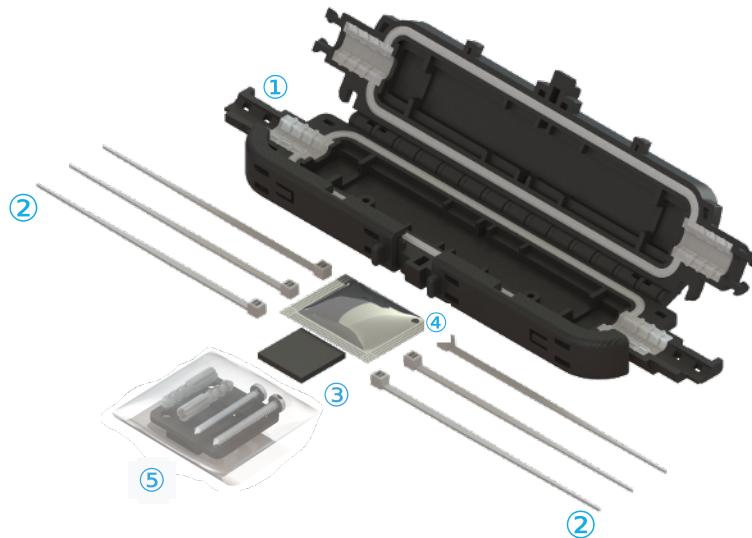
INSTALLATION MANUAL

IN-LINE FIBER FLAT DROP CABLE REPAIR SPLICE CLOSURE

The "IN-LINE FIBER FLAT DROP CABLE REPAIR SPLICE CLOSURE" by FUSIONGUARD® is preloaded with:

FCLO-HO-01E-1-EMP-FD			
NUMBER	CODE	DESCRIPTION	QTY
1	FCLO-HO-01E-FD	HORIZONTAL 1F SPLICE CLOSURE FD	1
2	EQ-10025BK	BLACK NYLON ZIP TIES UV RESISTANT	8
3	FCLO-CV-20MM	VULCANIZING TAPE 20 MM X 20 MM X 2 MM	2
4	SG-5G	SILICONE GREASE BAG 5 GR	1
5	FCLO-HO-01E-WKIT	WALL MOUNTING KIT SPLICE CLOSURE	1

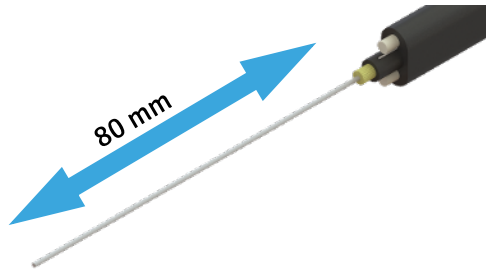
With our kit, any drop cable can be repaired quicker and easier than a complete last mile installation replacement.



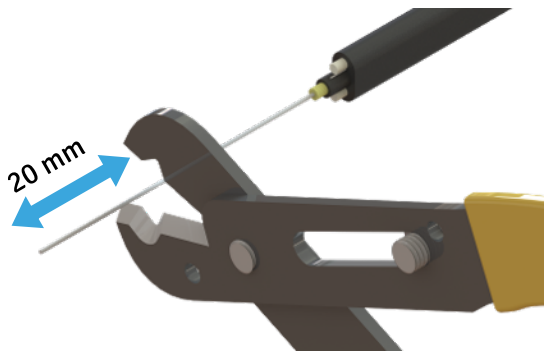
PFMS CONFIGURATION

STEP 1: CABLE'S PREPARATION FOR SPLICING PROCESS (PFMS FOR FLAT DROP CABLE)

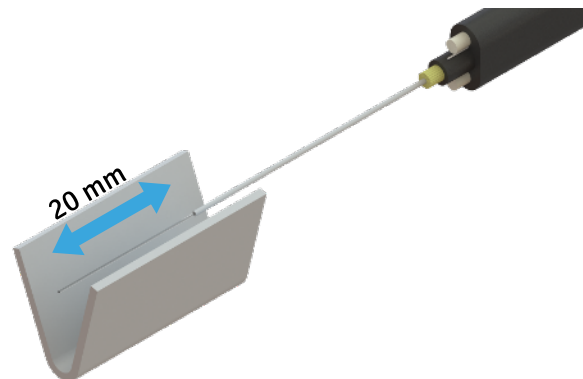
1.1 Make sure you have the right cable to follow the steps. In this case, use **FLAT DROP SIMPLEX** as it shown.



1.2 Use miller 900 um clamp to strip **FD** fiber coating.



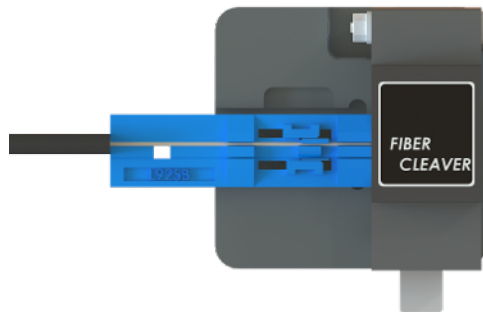
1.3 Check and clean the bare fiber with the dust free paper (Included).



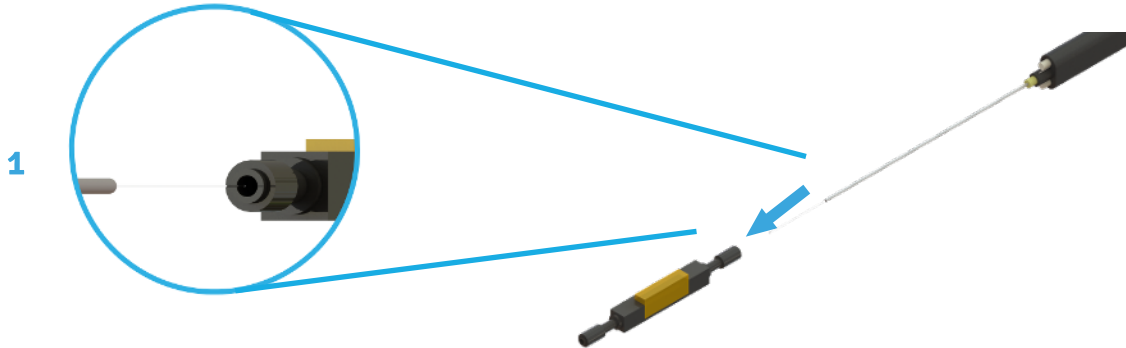
1.4 Place fiber into the cutting jig (Included) as it shown. (For 900 um)*.



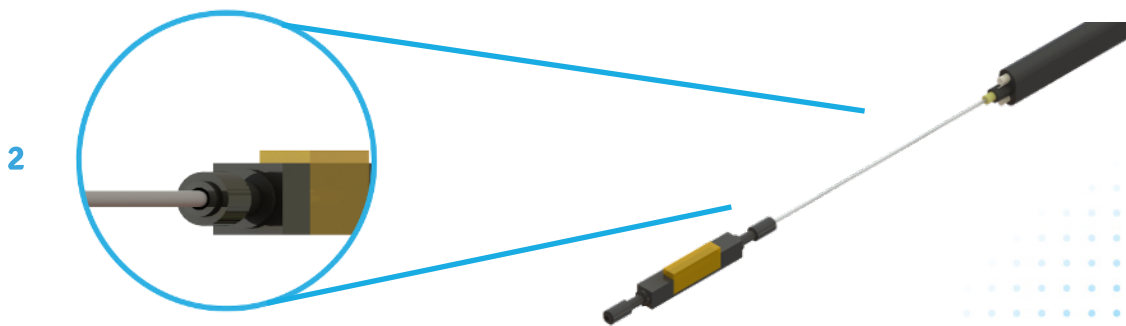
1.5 Place the cutting jig into the fiber cleaver and make the cutting.



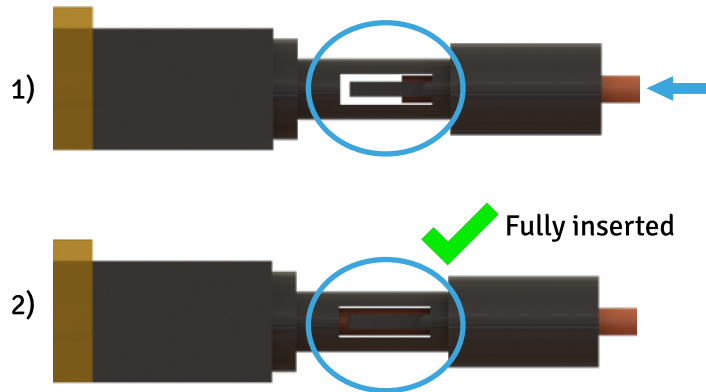
1.6 Now that the bare fiber is cut, from the 900 um optical fiber end is inserted into the mechanical splice end until it stops and repeat in both sides.



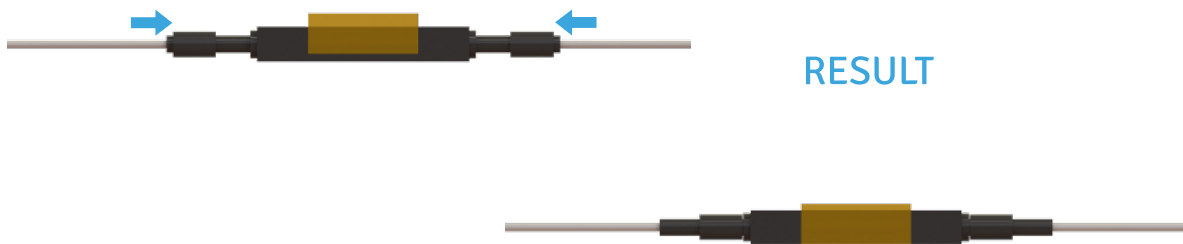
RESULT



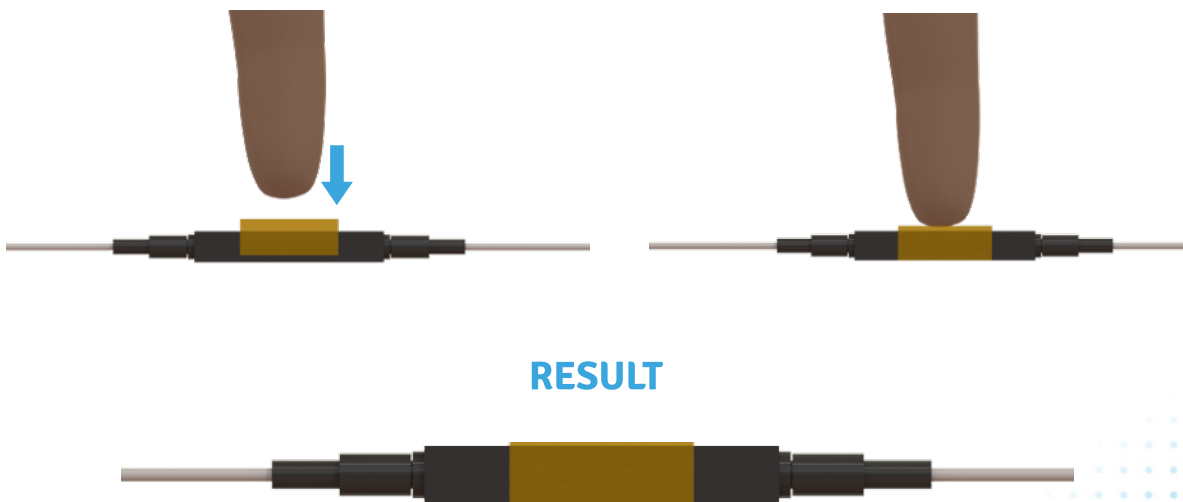
1.7 Insert the tight buffer confirming that it is fully inserted. Refer to the following images:



1.8 Once the fiber is into the mechanical splice, scroll the 900 um holder until it stops as it shown in the next image.



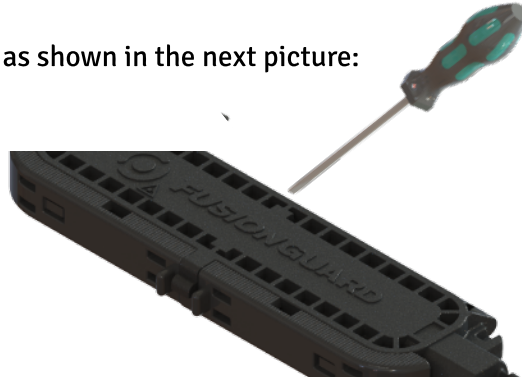
1.9 Press the yellow part until it stops to splice the fibers and to finish this process.



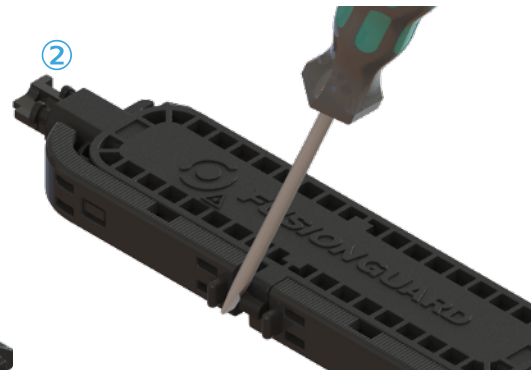
STEP 2: MECHANICAL SPLICE ARRANGEMENT

2.1 Begin by opening the **splice closure**, applying enough force on the hinges using a screwdriver.

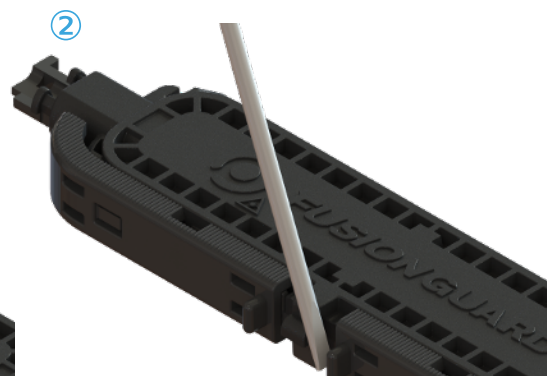
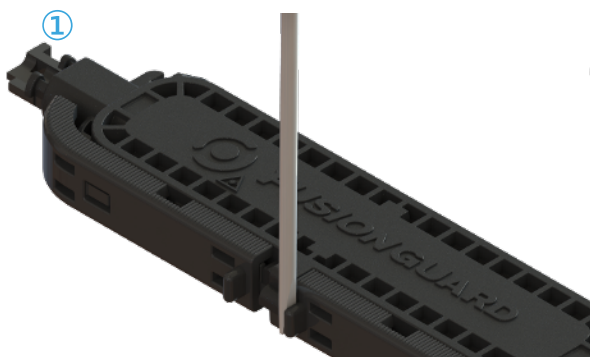
As a reference, open it as shown in the next picture:



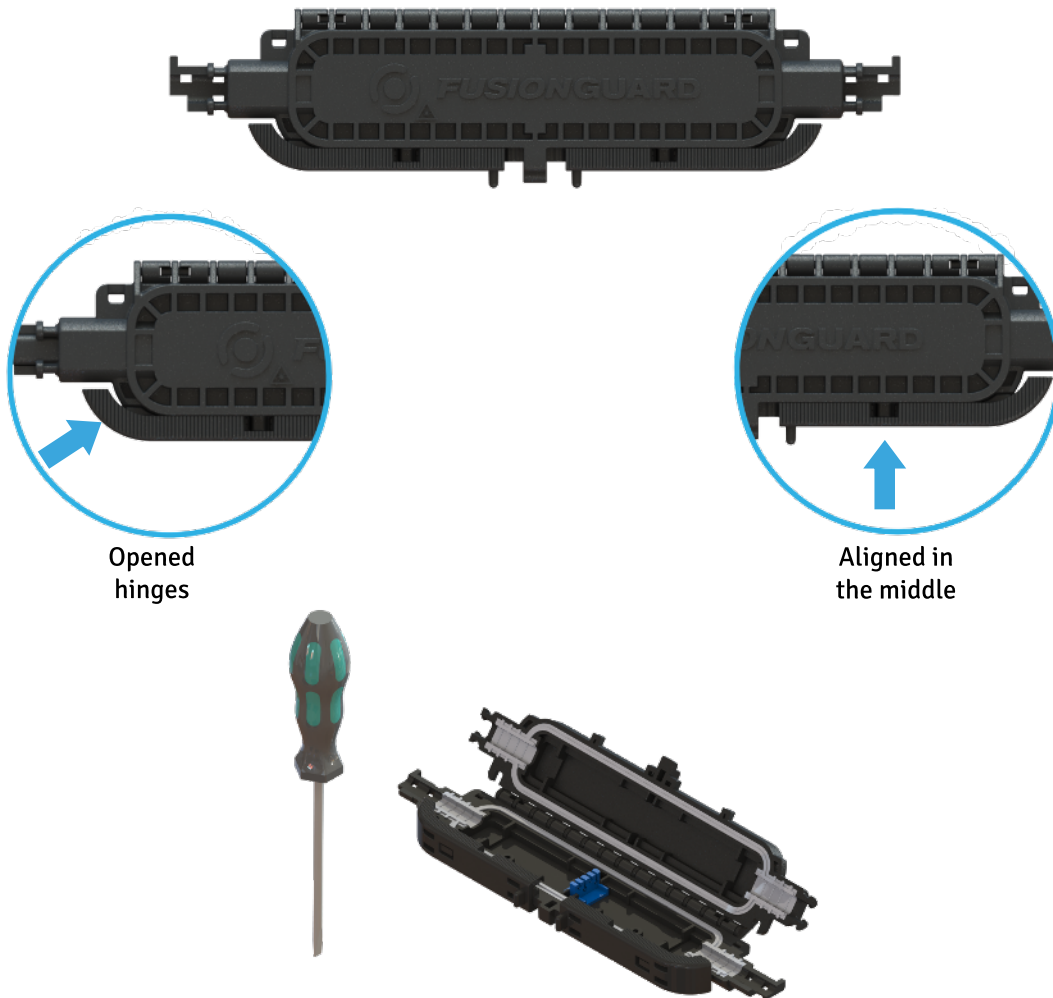
RIGHT SIDE



LEFT SIDE

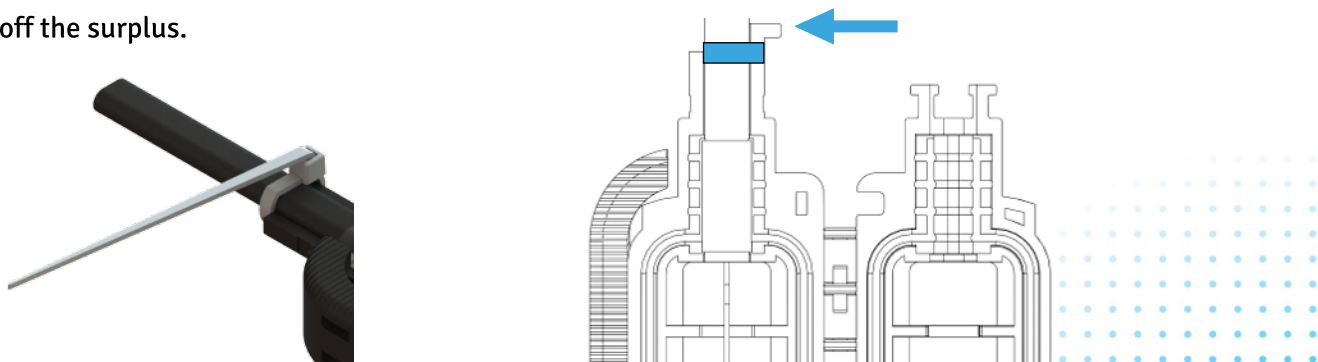


Opened splice closure

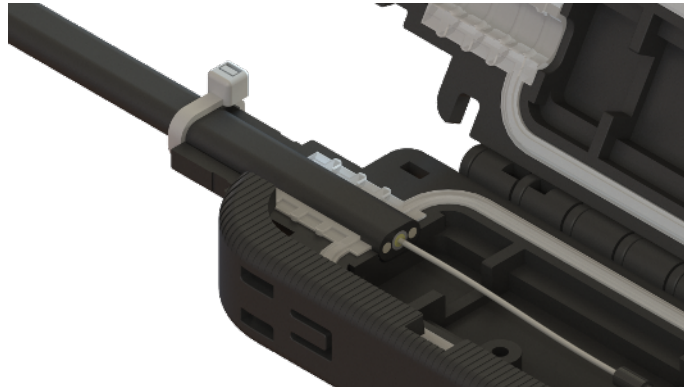


2.2 Place the cable and apply just **one** zip tie as shown to keep the cable properly placed as it shown. (Black zip ties will be shown white only for demonstrative purpose).

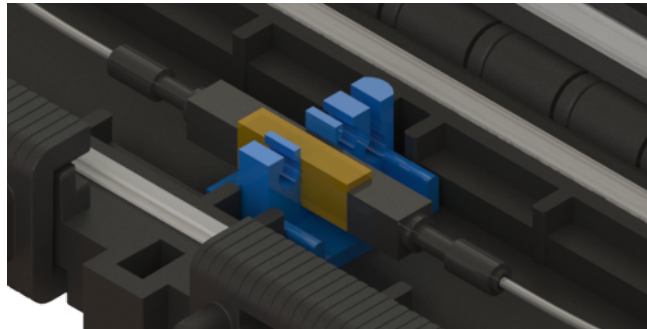
Cut off the surplus.



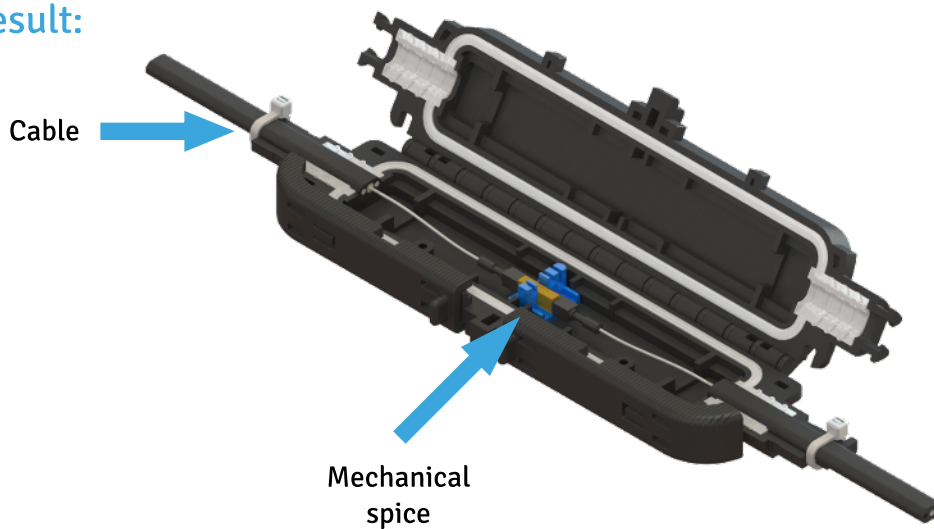
RESULT



2.3 Once the splice closure is opened, the next step will be holding the cable in place for better mechanical splice arrangement and placing the mechanical splice in the holder as it shown in the next image.

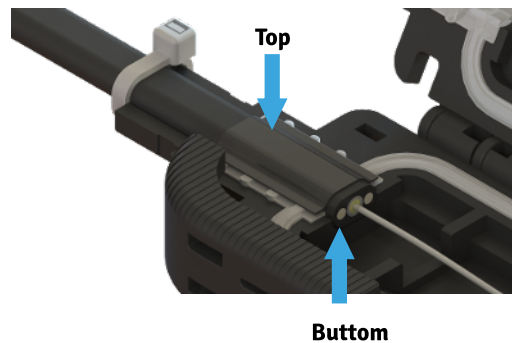
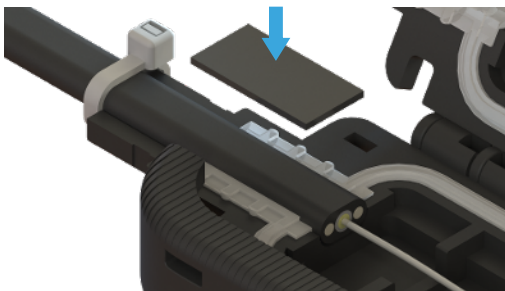
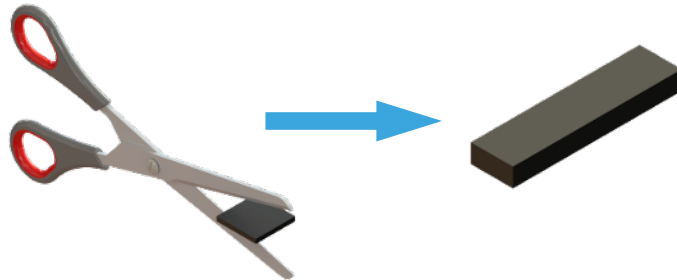


Result:

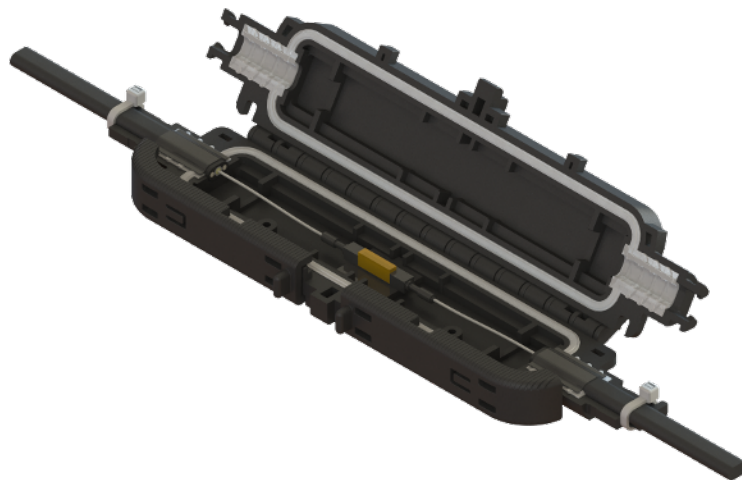


2.4 Once the cable is placed, apply vulcanized tape to the cable **on both** sides in order to completely seal the entry.

Apply the vulcanized tape to the grommets top to the grommets bottom as it shown. (Half of one a piece vulcanized tape (Included)).

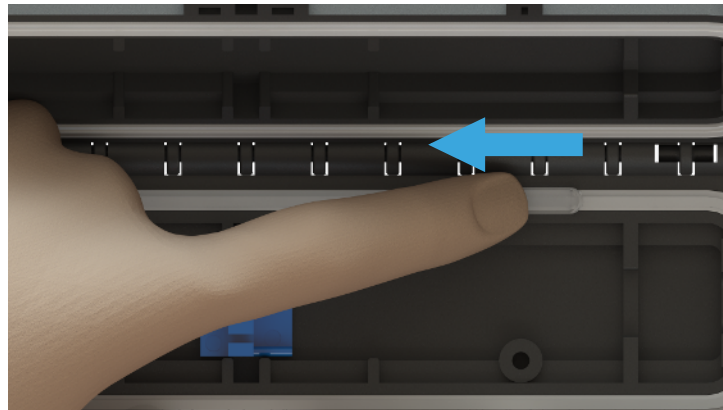
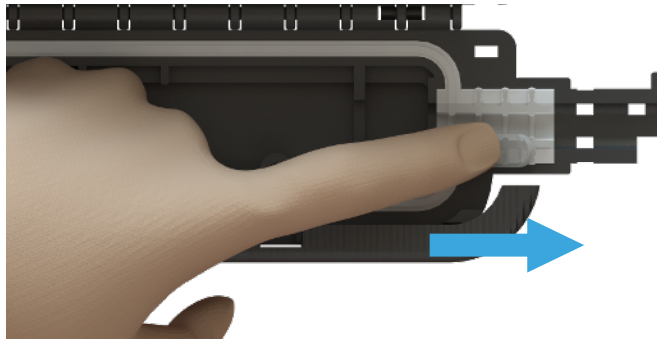
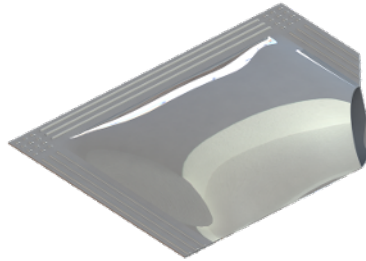


Result:

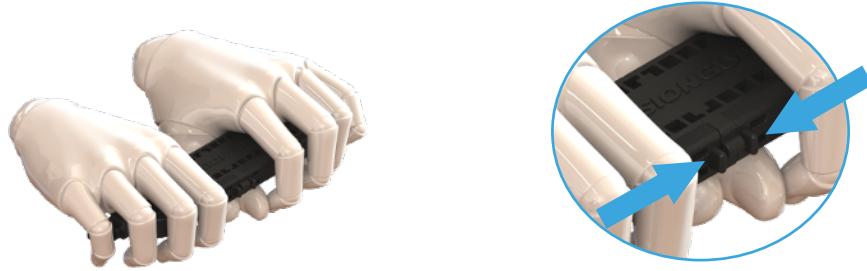


NOTE: Be careful that the splice is correctly located inside the in line splice closure before closing it as it shown in the image:

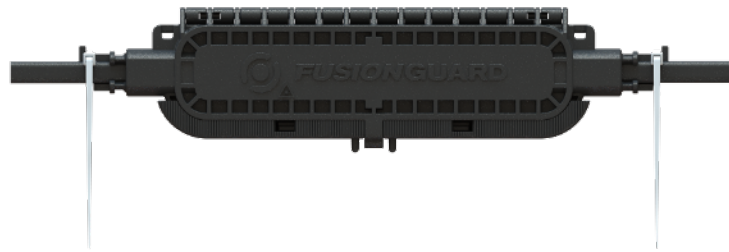
2.5 Open the silicone grease bag and add it over all the grommet as it shown.



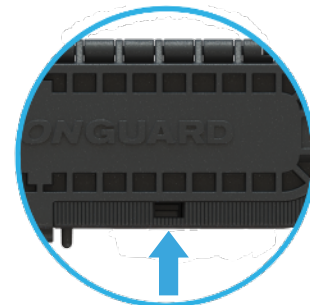
2.6 Proceed by closing the splice closure, putting the base and top together, and pushing the hinges.



Closed splice closure



Closed hinges



Not visible mark

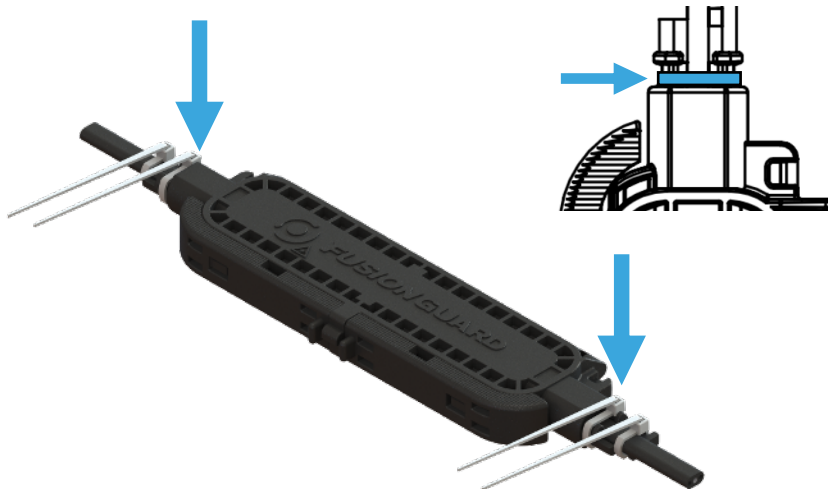


Result:



STEP 3. LAST ZIP TIES

3.1 Apply two zip ties, **one on each side** as shown. This will help by applying force on the sides.



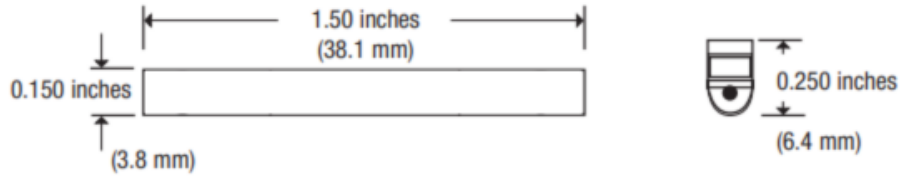
3.2 Finally, cut the remaining plastic of the zip ties. For better results, use a zip tie gun.

Result:



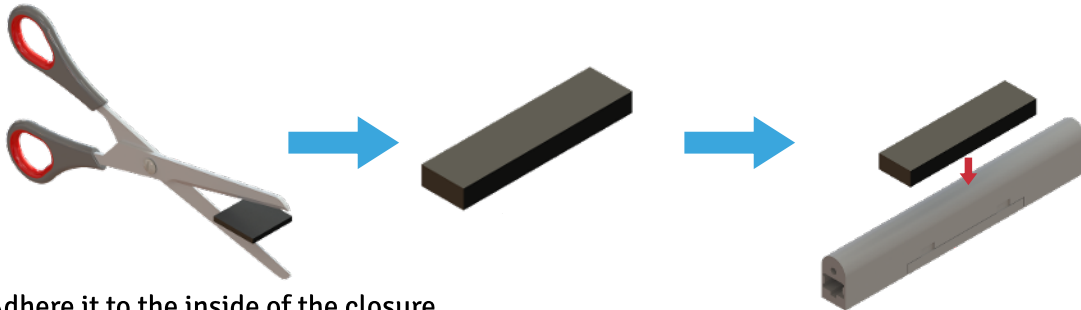
EMP CONFIGURATION

IN LINE TERMINAL SPLICE CLOSURE is suitable for any mechanical splice closure that accomplish the next measures:

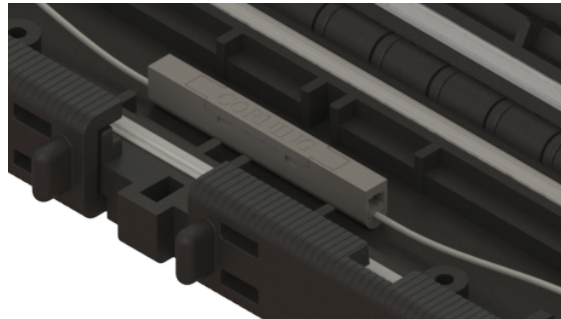


1.1 In each closure is included 2 pieces of vulcanized tape.

Cut the vulcanized tape into 2 parts and add a half to the mechanical splice.

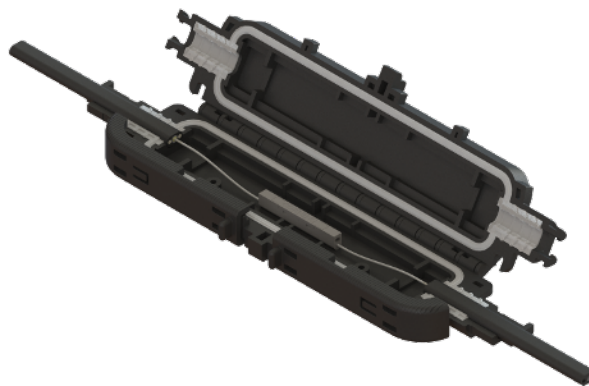


1.2 Adhere it to the inside of the closure.



1.3 Go to step **VULCANIZED TAPE AND ZIP TIES** to place the mechanical splice into the closure.

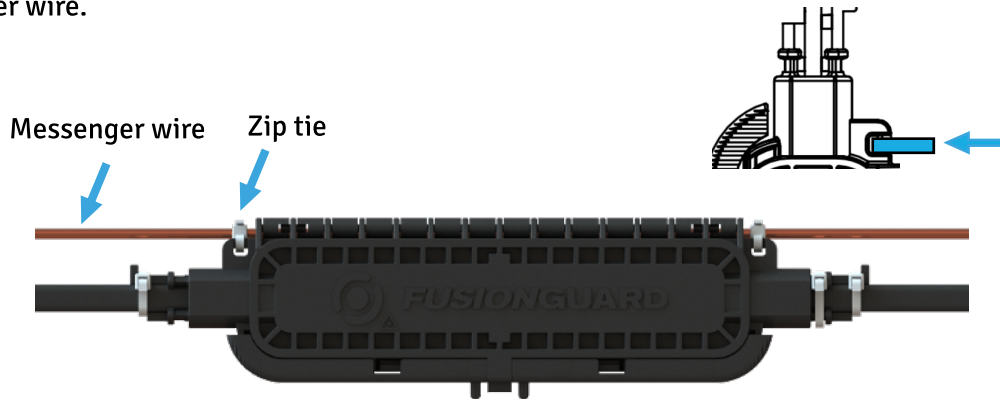
RESULT



AERIAL INSTALLATION

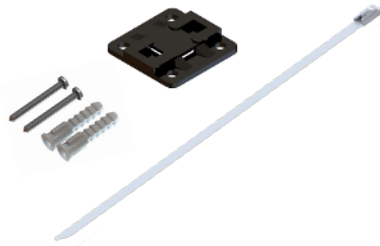
Use a metallic messenger wire already installed:

Two zip ties should remain after the closure sealing. Use them to hang the closure over a messenger wire.



WALL INSTALLATION

Wall mount installation requires the kit: FCLO-HO-01E-WKIT. This kit is included in each configuration.

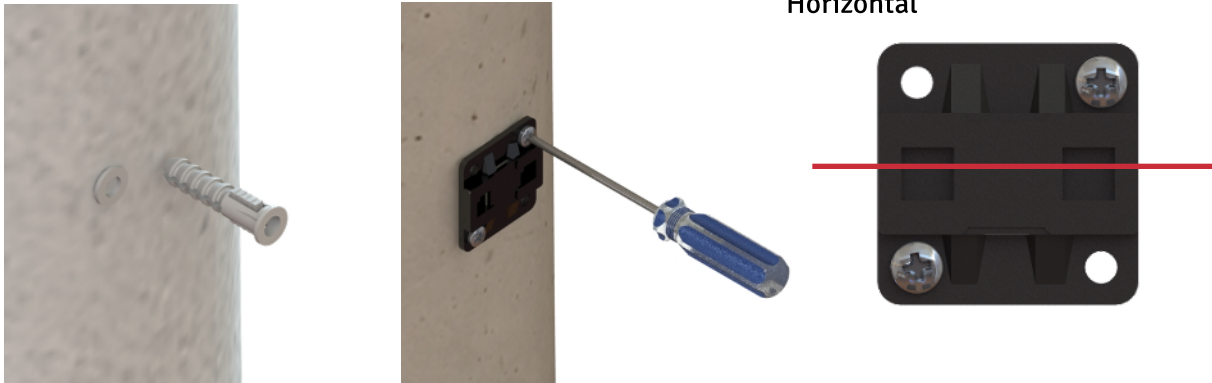


FCLO-HO-01E-WKIT

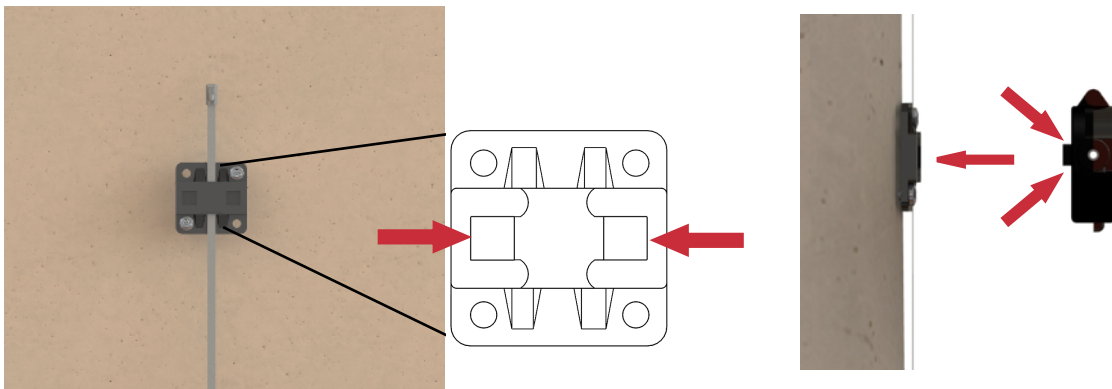
FCLO-HO-01E-WKIT		
CT-13604	8"X.18" STAINLESS STEEL CABLE TIE	1
1131314	#8 X 1 1/2" ZINC PAN PHILLIPS SHEET METAL SCREW	2
5014-PE-0000-006	CLOSURE MOUNTING BASE FCLO 1	1
PEB8-38	WHITE #8 X 37.5MM WALL ANCHOR	2
Note: Installation tools are not included		

We begin the installation by inserting the wall anchors in their place. Use a 7.5 mm drill bit to drill into the wall. These anchors will fix the mounting base on the wall. Place them and the screws in diagonal as it shown in the next image.

Be careful to keep the horizontal leveled.

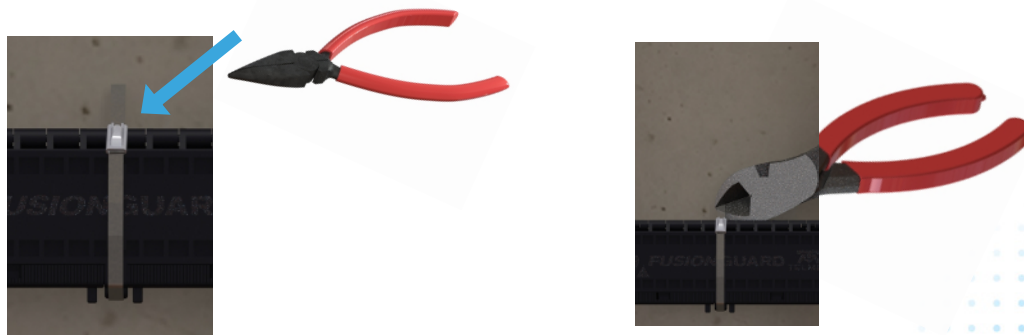


Next, insert the metal cable tie through the wall base, as shown. The mounting base has two extrusions that serve as insertion points for the repair splice closure.

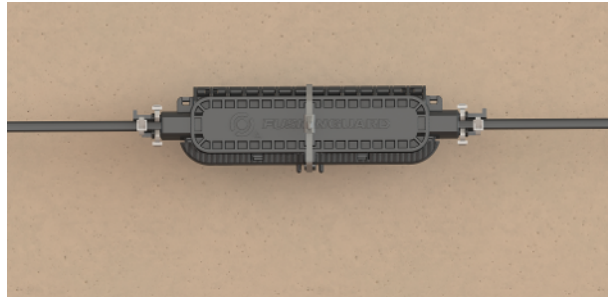


Finally, secure your installation by applying tension to the metal cable tie.

Cut the excess of the metal cable tie.



Result:

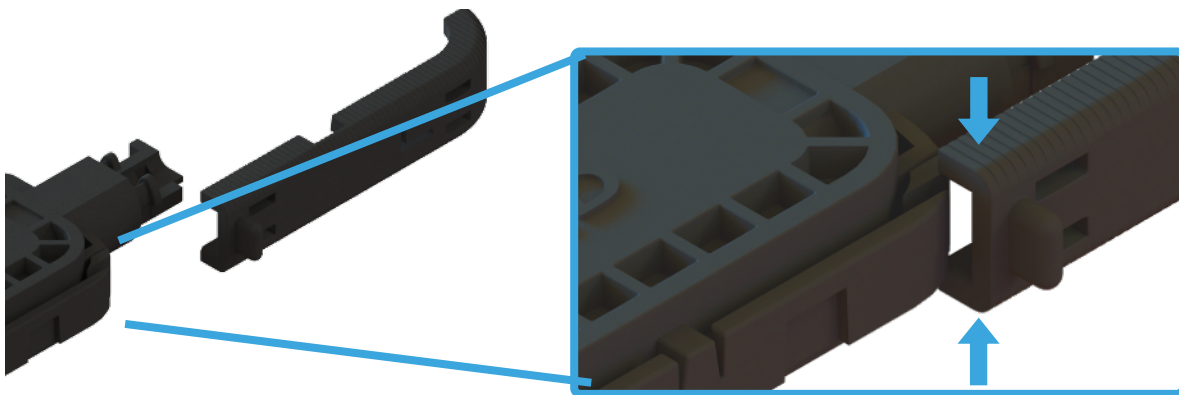


HINGES POSITION

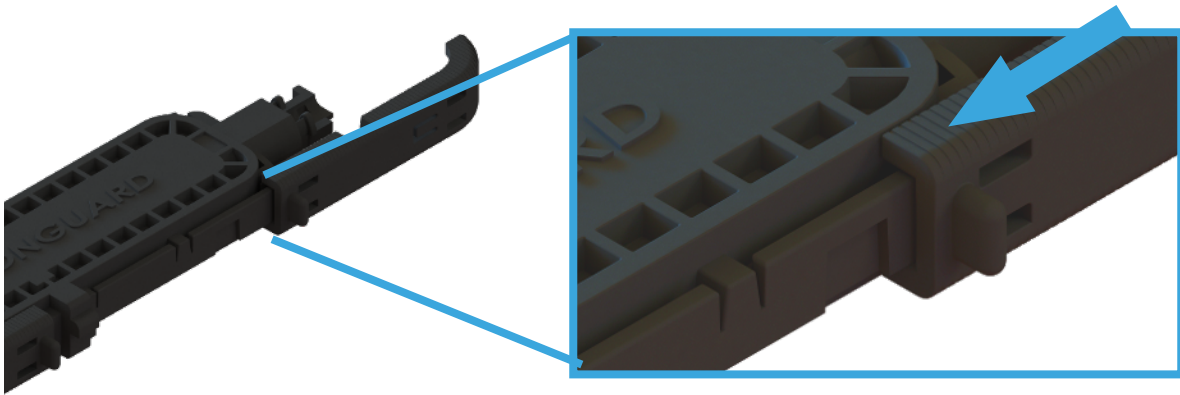
In case of that the splice hinges slips out of place as shown, it can be returned to its place.



1) Insert the hinge into the closure as in the next image:



2) Once in its place, move it over the body of the closure as shown in the following image.



3) Once in its place, move it over the body of the closure as shown in the following image.

