

PRODUCT INSTALLATION

FIRST STEP - POSITIONING

Open the terminal box by unlocking the side tabs and lifting the lid to reveal the inside of the box (as shown in figure 1). Next, locate the terminal box over a wall to make the marking of where the holes of the indicated zones will be drilled (as shown in figure 2).

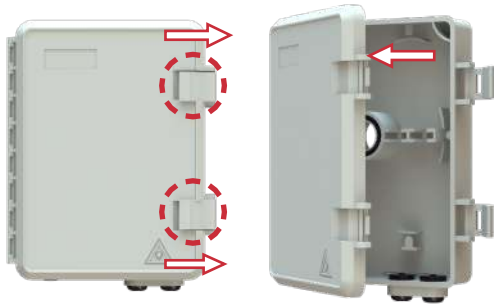


Fig. 1 Opening up terminal box

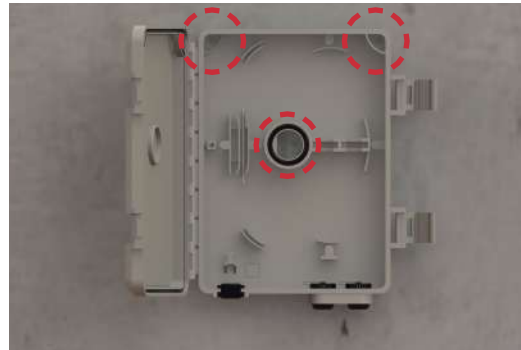
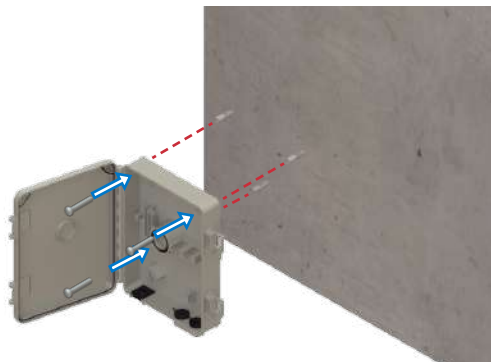


Fig. 2 Screw holes location

SECOND STEP - WALL MOUNTING

On the wall marks previously done, the 4 mm (0.15") holes are made with a drill. Once the drill holes are made, the 4 x 27 mm (0.15 x 1.06") wall anchors (dotted lines) are inserted inside the drill holes and are cautiously pressed inside with a hammer. The terminal box is placed over and is screwed (arrow symbols) until it stays completely fixed to the wall (as shown in figure 3).



Note: The terminal box will have the adapters pre-installed (as shown in the Fig. 6 according configuration)

Fig. 3 Screw and wall anchor positions



THIRD STEP - INPUTS AND OUTPUTS

The identification of the input port dedicated for drop cable must be made, is located on the lower left side of the terminal box. Also identify the output ports for cable which are located on the lower right side of the box (shown in figure 4).

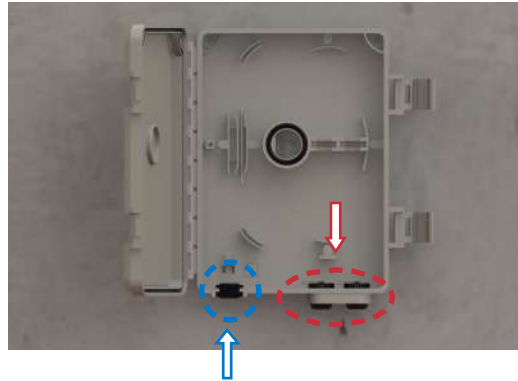


Fig. 4 Location of input port (left) and output ports (right)

FOURTH STEP - ROUTING AND SPLICING

Drop cable is inserted through the input port and is protected with a 4 cm (1.5") transport tube and is secured to the "T" tab with plastic tie, leaving approximately 2 meters (6.5 ft.) of cable routed inside the terminal box. Use this routed cable for future repairs. The fibers inside the cable are then spliced into pigtails*, protecting the splices with a splice sleeve and insert them in the splice sleeve holder (as shown in figure 5).

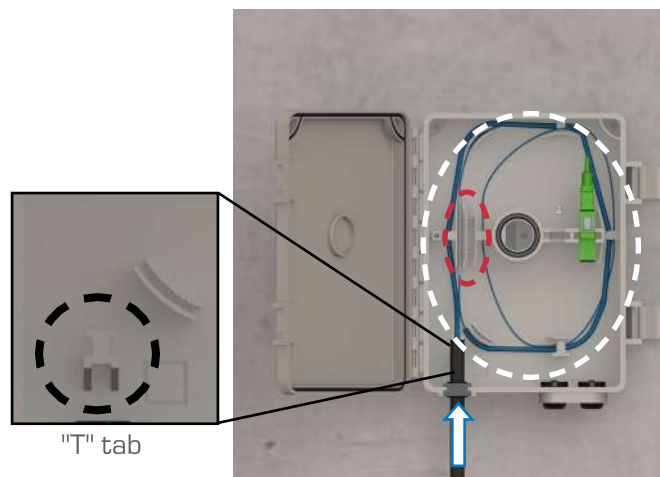


Fig. 5 Splice sleeve holder (smaller circle), routing zone (bigger circle).

* In case you need signal division, use a MEXFOSERV® 1x02 Splitter instead of the pigtail.

FIFTH STEP - CONNECTORIZATION

After splicing, the adapters are positioned in place, then proceed to take the connector dust caps off and connect into the adapters. On the other side of the adapter the output cables are connected which must be previously routed for about 2 meters (6.5 ft) before exiting through the output ports (as shown in figure 6).

Note: Adapters and pigtails (types and quantities) will be according configuration (the terminal box also could be without adapters and pigtails)

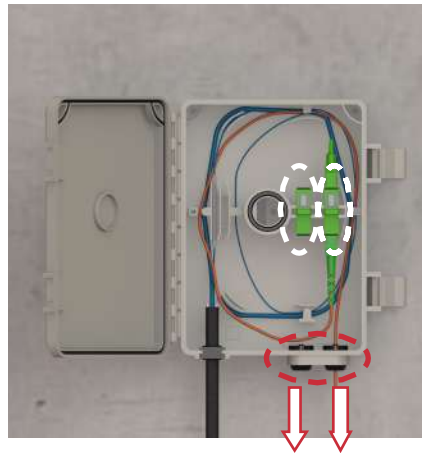


Fig. 6 Location of output ports (bottom right) and adapter bases (middle circles)

SIXTH STEP - CLOSING THE TERMINAL BOX

Once the mounting process is finished, the terminal box is closed and both side tabs are pressed until a click is heard (as shown in figure 7).

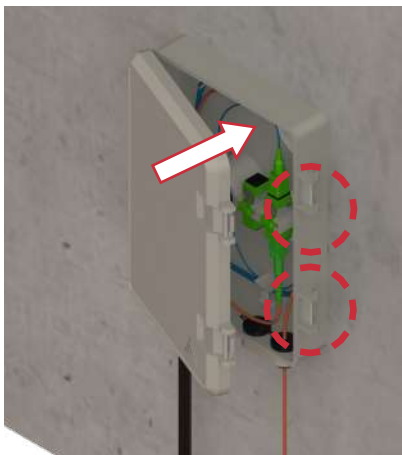


Fig. 7 Closing method

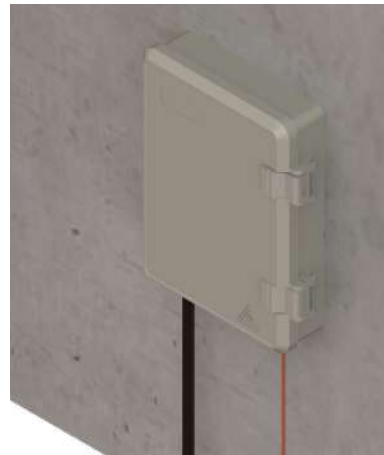


Fig. 8 Closed terminal box