



Central Loose Tube All-Dielectric Flat Ribbon Fiber Cable Dry

FOSPC-XXX-X-RSJADDUT-FTXXX-US/12-288 Fibers

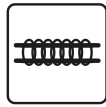
Applications



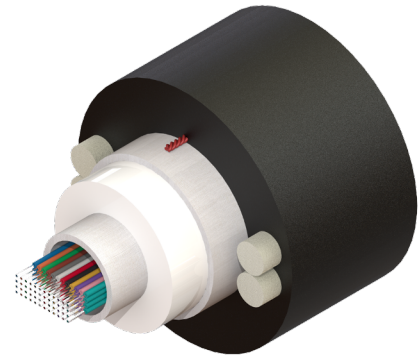
Outdoor



Duct Installation



Lashed



CENTRAL LOOSE TUBE ALL-DIELECTRIC FLAT RIBBON CABLE DRY 48F G657A1 FT

Protections



UV Resistant



Water Blocking

Description

Waveoptics® Central Loose Tube All-Dielectric Flat Ribbon Cable Dry are the most commonly-deployed outdoor cables, because of its price and its installation flexibility, since these cables can be installed both in aerial (lashed) installations as well as in ducts through the following techniques: air-blown, jetted or pulled into a duct. They are known because of their outstanding carrying capacity and compact design.

Dry water blocking technology allows a cleaner and quicker installation as well as a cost-friendly cable preparation. PE single jacket with additives makes a resistant, durable and easy to strip cable, providing superior protection against UV radiation, fungus, abrasion and other environmental factors. Dielectric strength members require no bonding or grounding.

Two ripcords ensure a quick fiber access.

Quality

Waveoptics® is a ISO-9001:2015 certified company.

We meet or exceed the following international standards:

- Telcordia GR-20: Generic requirements for optical fiber and optical fiber cable.
- IEC 60794: Basic requirements for optical fiber and cable elements.
- ANSI/ICEA S-87-640: Standard for optical fiber outside plant communications cable.

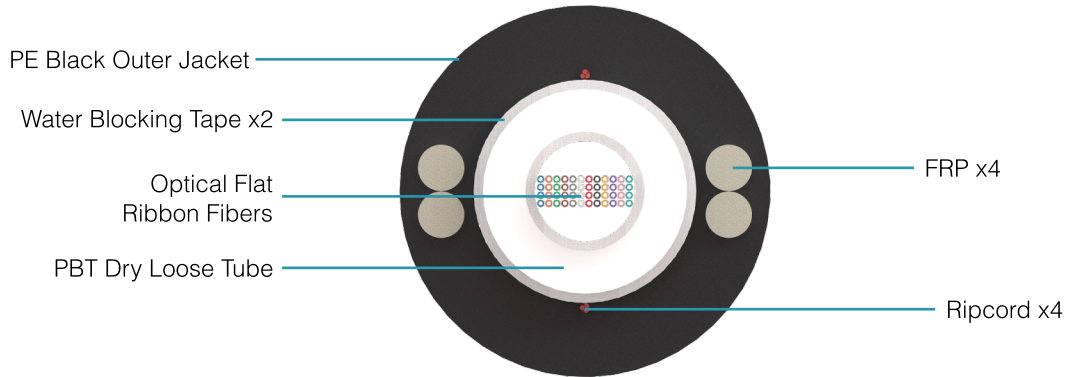
Each Waveoptics® cable meets the highest quality standards in the industry and contains a compliance certificate in which the performed tests in our quality laboratory are physically attached.


TECHNICAL DATA SHEET

OUTDOOR CABLE

FOSPC-XXX-X-RSJADDUT-FTXXX-US/12-288 Fibers

Dimensions & Properties



Design	
Fiber per Tube	12 - 288
Fiber Color Code	 *Note: Each sub-unit of 12 fibers is marked with its corresponding number of identification.
Strength Member Material / Diameter	FRP / 1.6 mm (0.06 in)
Outer Jacket Material	Polyethylene
Inner Tube Material / Diameter	PBT
Drum Length	12-144F: 20,000 ft (±5%) 216-288F: 15,000 ft (±5%)
Temperature Range	
Operation	-40°C to 70°C (-40° F to 158° F)
Installation	-30°C to 70°C (-22° F to 158° F)
Storage / Transport	-40°C to 70°C (-40° F to 158° F)
Mechanical Properties	
Crush Resistance (Short-Term / Long-Term)	2,200 N/100 mm / 1,100 N/100 mm
Minimum Bend Radius (Installation / Operation)	10 x OD / 20 x OD

Note: Waveoptics® recommends storing cable in a proper temperature environment prior to installation to allow the cable temperature to meet installation temperature range specifications for best installation results.

Folio PE-651-01-EN

Last Review 6/6/2023

www.waveoptics.net

info@waveoptics.net

TECHNICAL DATA SHEET OUTDOOR CABLE

FOSPC-XXX-X-RSJADDUT-FTXXX-US/12-288 Fibers

Dimensions & Properties

Fiber count	Ribbon per tube	Fibers per ribbon	Tensile Strength (N) (lbf) Short-Term / Long-Term	Cable weight (kg/km) (lb/kft) (±10%)	PBT Central Loose Tube Dry Diameter (mm) (in) (±5%)	Nominal outer diameter (mm) (in) (±5%)
12	1	12	2,700 /900 (607/202)	102 (69)	6.6 (0.25)	12.4 (0.48)
24	2	12	2,700 /900 (607/202)	104 (70)	6.6 (0.25)	12.4 (0.48)
36	3	12	2,700 /900 (607/202)	115 (77)	7.6 (0.29)	13.4 (0.52)
48	4	12	2,700 /900 (607/202)	116 (78)	7.6 (0.29)	13.4 (0.52)
60	5	12	2,700 /900 (607/202)	120 (81)	7.9 (0.31)	13.7 (0.53)
72	6	12	2,700 /900 (607/202)	122 (82)	7.9 (0.31)	13.7 (0.53)
96	8	12	2,700 /900 (607/202)	132 (89)	8.6 (0.33)	14.4 (0.56)
144	12	12	2,700 /900 (607/202)	149 (100)	9.4 (0.37)	15.2 (0.59)
216	9	24	2,700 /900 (607/202)	200 (134)	13 (0.51)	18.8 (0.74)
288	12	24	2,700 /900 (607/202)	217 (146)	13.8 (0.54)	19.6 (0.77)

Printed Information on Outer Jacket

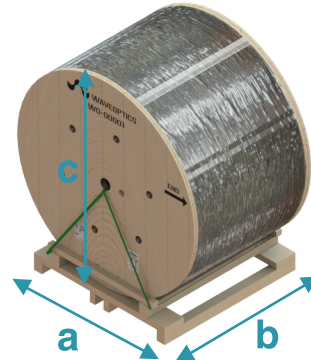
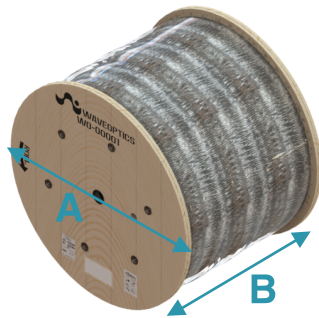
= /MONTH//YEAR/WAVEOPTICS/OPTICAL CABLE == RSJADDUT ==  ==/FIBER TYPE//=/FIBER COUNT//=/LOT#//=

- Printed in white and resistant to physical tests on marking
- Marking interval: every 2 feet + 1%

TECHNICAL DATA SHEET OUTDOOR CABLE

FOSPC-XXX-X-RSJADDUT-FTXXX-US/12-288 Fibers

Drum Dimensions and Pallet Packaging Information



Drum Length (ft) (m) (±5%)	Fiber count	A (mm) (in) (±5%)	B (mm) (in) (±5%)	Drum and pallet total weight (kg) (lb) (±10%)	Total packaging (±5%)		
					a (mm)(in)	b (mm)(in)	c (mm)(in)
20,000 (6,096)	12	1,700 (67)	720 (28)	818 (1,803)	1,700 (67)	970 (38)	1,822 (72)
	24	1,700 (67)	720 (28)	830 (1,830)	1,700 (67)	970 (38)	1,822 (72)
	36	1,500 (59)	1,100 (43)	882 (1,945)	1,500 (59)	1,219 (48)	1,619 (64)
	48	1,500 (59)	1,100 (43)	888 (1,958)	1,500 (59)	1,219 (48)	1,619 (64)
	60	1,500 (59)	1,100 (43)	912 (2,011)	1,500 (59)	1,219 (48)	1,619 (64)
	72	1,500 (59)	1,100 (43)	918 (2,011)	1,500 (59)	1,219 (48)	1,619 (64)
	96	1,600 (63)	1,100 (43)	1,010 (2,227)	1,600 (63)	1,219 (48)	1,721 (68)
	144	1,700 (67)	1,100 (43)	1,130 (2,491)	1,700 (67)	1,219 (48)	1,822 (72)
15,000 (4,572)	216	1,800 (71)	1,100 (43)	1,150 (2,535)	1,800 (71)	1,219 (48)	1,924 (76)
	288	2,000 (79)	1,100 (43)	1,246 (2,747)	2,000 (79)	1,219 (48)	2,134 (84)

Note 1: Please contact your sales agent for higher fiber counts or different drum lengths available.

Note 2: All documentation included in each drum of cable is in English, if a different language is needed, please contact your sales agent.

All drums include:*

1. Drum handling instructions
2. Test report certificate
3. Product description (weight, dimensions, lot and part number)
4. End cable marking
5. Both ends include end caps to protect against humidity

Folio PE-651-01-EN

Last Review 6/6/2023

www.waveoptics.net

info@waveoptics.net

TECHNICAL DATA SHEET OUTDOOR CABLE

FOSPC-XXX-X-RSJADDUT-FTXXX-US/12-288 Fibers

Transmission Performance by Fiber Type

Fiber Type	Single Mode	
Waveoptics® Fiber Type	G652.D	G657.A1
Waveoptics® Fiber Code	F	T
Wavelength (nm)	1310/1550	
Max.attn. (dB/km) (1)	0.36/0.25	0.36/0.25
Cable Marking Specifications	G652.D	G657.A1
Notes: (1) Maximum attenuation after cabling process		

Part Number Configuration

FOSPC-**XXX**-**X**-RSJADDUT-FT**XXX**-**US**

Fiber Count

012 - 12 Fibers
024 - 24 Fibers
036 - 36 Fibers
048 - 48 Fibers
060 - 60 Fibers
072 - 72 Fibers
096 - 96 Fibers
144 - 144 Fibers
216 - 216 Fibers
288 - 288 Fibers

Waveoptics Fiber Type

F - SM G652.D
T - SM G657.A1

Drum Length

OBS - 15,000 ft
OBW - 20,000 ft

Optical Cable Compliance

US - Waveoptics® Standard

Note: please contact your Waveoptics® distributor if you need any additional compliance or if you have questions about the part number configuration.

Folio PE-651-01-EN

Last Review 6/6/2023

www.waveoptics.net

info@waveoptics.net