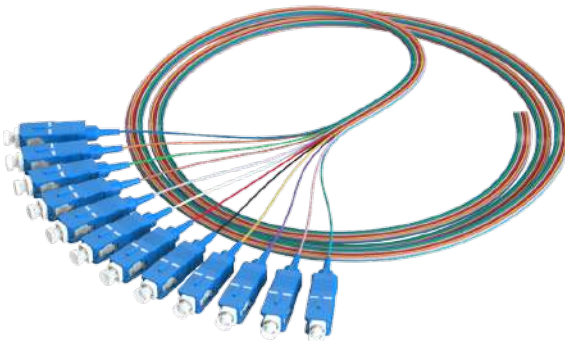


FIBER OPTIC PIGTAIL

PT-XX-XXX-XXXX-X-S-XX
PATCH CORDS

The MEXFOSERV® Fiber Optic Pigtailed are available in various fiber types, fiber/cable constructions and connector options. We have a large stock of cables and connectors for a fast turnaround on custom assemblies.

These factory-based assemblies are machine polished to ensure excellence in performance intermateability and durability. All pigtailed are video inspected to ensure connector end-faces are free of defects and contamination. Insertion loss is tested using standard-based testing procedures.



900µm SC / UPC fiber optic pigtailed



3mm LC fiber optic pigtail

APPLICATIONS

- Fusion splicing
- Mechanical splicing
- Fiber cable acceptance testing

CHARACTERISTICS

- 900µm, 1.2mm, 1.6mm, 2mm & 3mm OD
- APC & UPC polish
- PVC (Riser) standard jacket
- 2m (6.5ft) standard length

STANDARDS

- RoHS
- ANSI/TIA-568-C.3
- ANSI/TIA-598-C
- GR-326-CORE
- GR-1221-CORE
- GR-1209-CORE

Note: Illustrative images



MEXFOSERV® offers a large variety of fiber optic cable assemblies. If you don't see what you are looking for or have questions about our ordering matrix contained on this spec sheet please email us info@mexfoserv.com



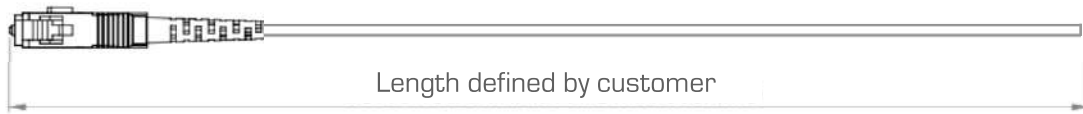
SPECIFICATIONS

SINGLE-MODE SPECIFICATIONS										
	UPC (ULTRA-PHYSICAL CONTACT)						APC (ANGLED PHYSICAL CONTACT)			
CONNECTOR TYPE *	SC	FC	ST	LC	MU	E2000	SC	FC	LC	E2000
Standard body color	Blue	Metallic	Metallic	Blue	Brown	Blue	Green	Metallic	Green	Green
2 & 3mm boot color	Blue	Blue	Blue	Blue	Blue	Blue	Green	Green	Green	Green
900µm boot color	Blue	Blue	Blue	White	N/A	N/A	Green	Green	White	N/A
**Max. Insertion Loss (1310nm & 1550nm)	≤ 0.20 dB						≤ 0.20 dB			
**Min. Return Loss (1310nm & 1550nm)	≥ -55dB						≥ -65 dB			
Ferrule Type	Ceramic						Ceramic			
Ferrule Diameter	2.5mm			1.25mm	2.5mm		2.5mm	1.25mm	2.5mm	
Operational Temperature	-40°C ~ 75°C (-40°F ~ 167°F)									
* ST connectors not available in 1.2mm. E2000 connectors available in 2mm only. MU available only with 1.6mm & 2mm. ** As per the tables above, maximum insertion loss (IL) & return loss (RL) fall well below the maximum connector IL & RL allowed under GR-1221-CORE & GR-1209-CORE.										

MULTI-MODE SPECIFICATIONS				
	UPC (ULTRA-PHYSICAL CONTACT)			
CONNECTOR TYPE	SC	FC	ST	LC
Standard Body Color	Beige	Metallic	Metallic	Beige
900µm, 2 & 3mm boot color	Black	Black	Black	Black
900µm, 2 & 3mm Optimized boot color	Aqua	Aqua	Aqua	Aqua
* Max Insertion Loss (850nm & 1300nm)	≤ 0.35 dB			
* Min Return Loss (850nm & 1300nm)	≥ -35 dB			
Ferrule Type	Ceramic			
Ferrule Diameter	2.5mm			1.25mm
** As per the tables above, maximum insertion loss (IL) & return loss (RL) fall well below the maximum connector IL & RL allowed under GR-1221-CORE & GR-1209-CORE.				




DIMENSIONS



Pigtail length tolerances are the following:
 L < 1.0 m; +0.05 m / - 0.0 m
 L ≥ 1.0 m; +0.15 m / - 0.0 m
 L ≥ 10.0 m; +3% / -0.0 m

Note: Illustrative images

PACKAGING

MASTER BOX PACKAGING SPECIFICATIONS			
900UM & 1.2MM SX PATCH CORD	1.6MM TO 3.0MM SX PATCH CORD	INDIVIDUAL BAG	ASSEMBLIES PER MASTER BOX
.5 - 50 mts	.5 - 30 mts	1141 bag 8" X 8"	48 bags in a MEXFO03 master box
51 - 80 mts	31 - 80 mts	1119 bag 10" X 12"	8 bags in a MEXFO03 master box
REEL PACKAGING			
	1.6MM TO 3.0MM SX PATCH CORD	INDIVIDUAL REEL	REEL BOX
	Length superior to 80 meters	3494-005 Reel	1 reel per master box MEXFO02
6 or 12 pieces (1 to 5 meters)	223x178mm (8.78"x7.01") plastic blister	18 blister in a MEXFO02 master box	

Notes:

1. If Final Inspection & Geometry tests are required in a printed version, these have an additional cost. Please request quotation with your Sales Executive.
2. If you require your cable assemblies on a reel, please contact your Sales Executive to request your quotation.



PRODUCT WEIGHT

The weight of the fiber optic patch cord could vary because of the cable diameter; length of the assembly or connector type. For this reason we add the next section, where the weight can be calculated with a simple formula and the data of the table.

$$[\text{Meters of cable} \times \text{Weight of the cable depending on the diameter}] + [\text{Connector weight}] = \text{Total weight} \pm 5 \text{ gr}$$

CABLE WEIGHT				
CABLE DIAMETER CONFIGURATION	900µm	1.6mm	2.0mm	3.0mm
Weight of the cable (gr/mt)	.9	2.9	3.9	6.6

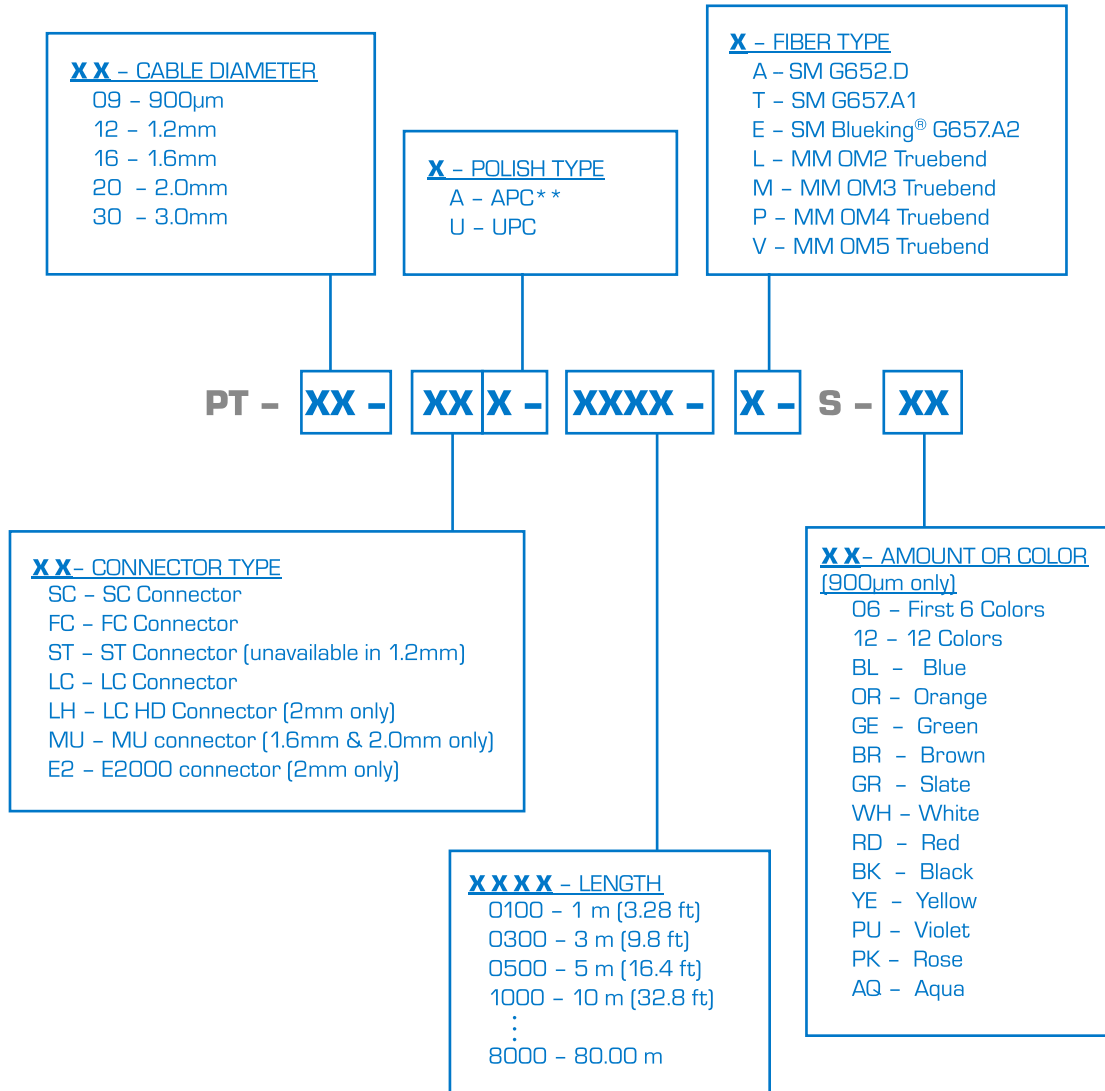
SC CONNECTOR WEIGHT	
DESCRIPTION	INDIVIDUAL WEIGHT
3mm SC Simplex Connector	3.125 gr
2mm SC Simplex Connector	3.145 gr
900um SC Simplex Connector	3.485 gr
4.8mm SC Simplex Connector	4.985 gr

LC CONNECTOR WEIGHT	
DESCRIPTION	INDIVIDUAL WEIGHT
3mm LC Duplex Connector	2.5 gr
2mm LC Duplex Connector	3 gr
900um LC Simplex Connector	0.785 gr
2mm HD LC Simplex Connector	1.745 gr



ORDERING MATRIX

FIBER OPTIC PIGTAIL



900µm color code according to ANSI/TIA-598-C

* 1.2, 1.6, 2 & 3mm pigtail standard colors:

- Yellow - 9/125 SM G657A1
- Blue - 9/125 SM G657A2
- Orange - 62.5/125 MM OM1 & OM2
- Aqua - 50/125 MM OM3 & OM4
- Lime - 50/125 MM OM5

Other colors are available upon request. MOQ & lead times may apply.

** The APC Multi-Mode optical assembly is manufactured by special request because it is an unusual configuration. ST & MU connectors unavailable in APC.

