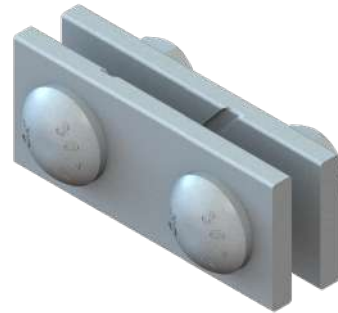


# SUSPENSION

## CROSSOVER SUSPENSION CLAMPS



HCR-AG-CP-US



HCR-AG-US

### \GENERAL

#### \DESCRIPTION

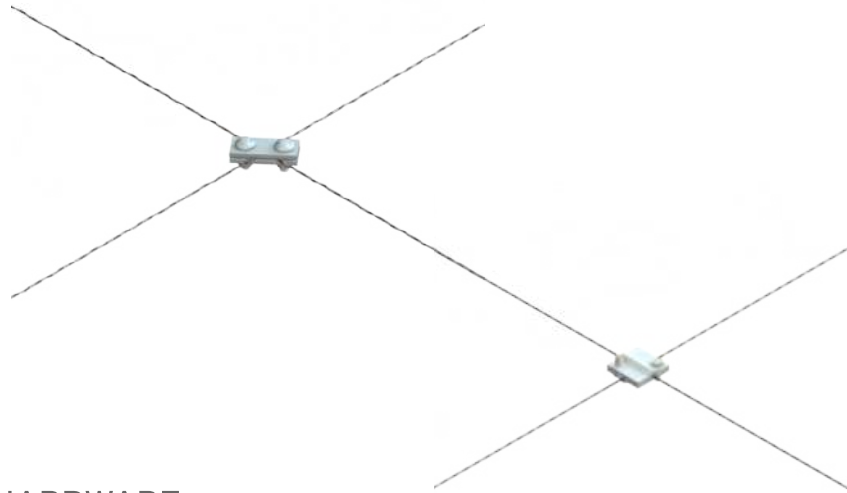
The AERIALGRIP® Crossover Suspension Clamps are designed to protect messenger cables or wire strands when crossing each other perpendicularly in aerial construction at the mid-span, substantially reducing friction between surfaces. Both plates and bolts provide excellent support, gripping the cables in place.

#### \FEATURES

- Automatic suspension once two opposing ends are entered.
- Provides up to 1000N in grip strength.
- No wall or lamp post required for installation.
- Tapped plates to eliminate handling of loose nuts
- Great mechanical resistance.
- HCR-AG-CP-US accommodates 1/4" messenger cable.
- HCR-AG-US accommodates from 1/4" to 3/8" messenger cable.
- Corrosion resistant
- Hot dipped galvanized to meet ASTM A-153 standards



## \APPLICATION



## \RELATED HARDWARE

	CODE	DESCRIPTION	PICTURE
1)	HCR-AG-CP	CROSSOVER SUSPENSION CLAMP FOR 1/4" MESSENGER WIRE	
2)	HCR-AG	CROSSOVER SUSPENSION CLAMP FOR 1/4" - 3/8" MESSENGER WIRE	

Note: Nuts and/or bolts required for installation INCLUDED with each crossover clamp.

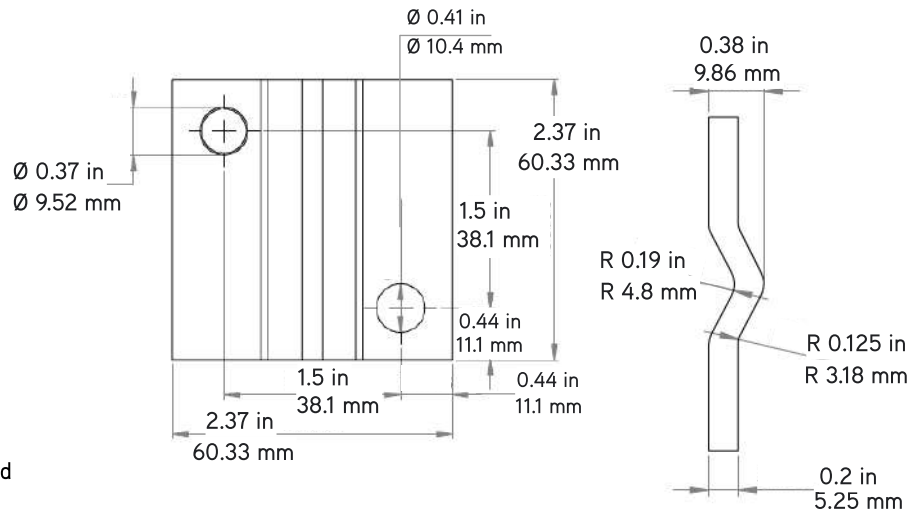
## \DIMENSIONS

### \1/4" CROSSOVER SUSPENSION CLAMP HCR-AG-CP



**Fig 1** Two galvanized steel plates and two 3/8" bolts

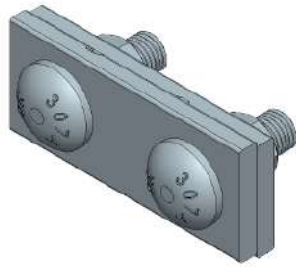
**Unit Weight:** 0.68 lb ± 0.04 lb (315g ± 20g)



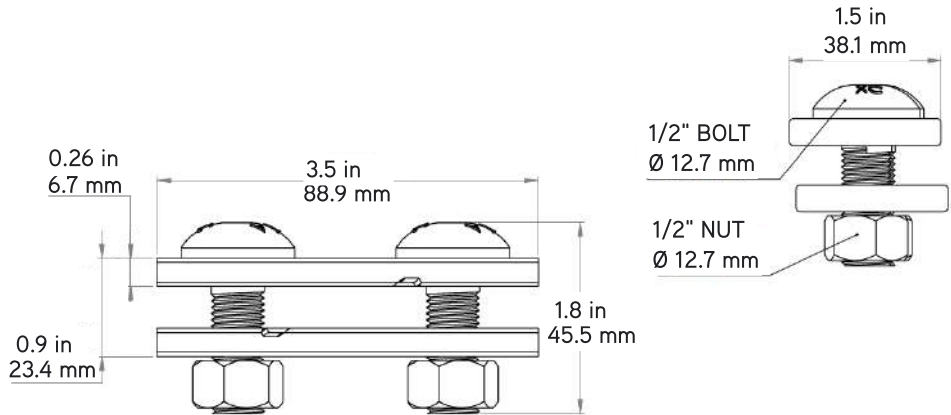
**Note:** Dimensions shown in inches and mm.

**Tolerances:** ±7%

**\1/4" - 3/8" CROSSOVER SUSPENSION CLAMP HCR-AG**



Unit Weight: 0.66 lb ± 0.04  
lb (302g ± 20g)



Note: Dimensions shown in inches and mm.  
Tolerances: ±7%

**\PACKAGING**

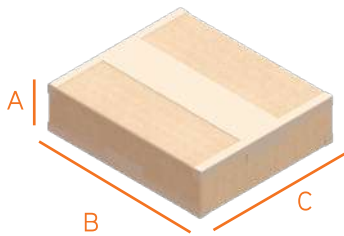


Fig 2: FONCS00-SL (0.38lb - 175g)



Note: Illustrative images

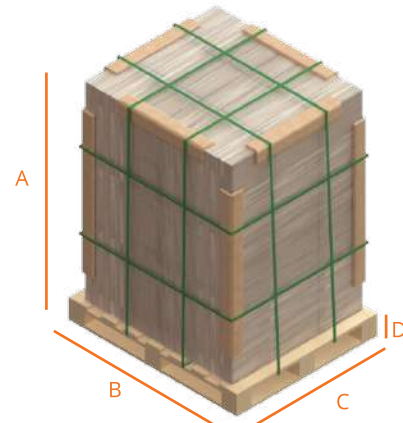


Fig 3. Full pallet packaging

Box	A (in)/(mm)	B (in)/(mm)	C (in)/(mm)	Weight (lb/kg)
HCR-AG	3.3/85	11.8/300	9.85/250	12.36 / 5.61
HCR-AG-CP	3.3/85	11.8/300	9.85/250	12.36 / 11.5

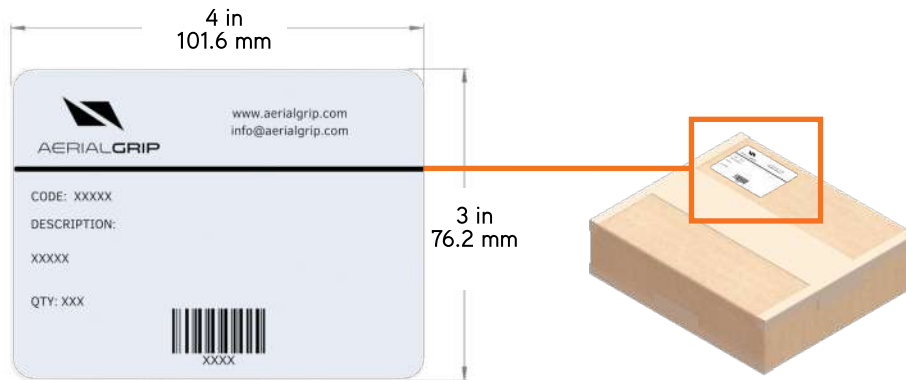
Note: Box weight (0.38lb/175g) included.  
HCR-AG: 18 piece packaging  
HCR-AG-CP: 36 piece packaging

Box	A (in)/(mm)	B (in)/(mm)	C (in)/(mm)	D (in)/(mm)	Weight (lb/kg)
HCR-AG	38.9/990	48/1219.2	40/1016	5.5/140	2022.9/917.6
HCR-AG-CP	22.2/565	48/1219.2	40/1016	5.5/140	2072.4/940

Note: Boxes and pallet weight (44.1 lb / 20kg) included.  
Full pallet arrangement for HCR-AG: 4x4x10\* (160 boxes / 2800 pcs)  
Full pallet arrangement for HCR-AG-CP: 4x4x5 (80 boxes / 2880 pcs)

Note\*: Packaging should include edge protectors/corner guards after 3 pallet layers

## \LABELING SPECIFICATIONS



## \ORDERING MATRIX

\CROSSOVER SUSPENSION CLAMP FOR 1/4" STRAND

**HCR-AG-CP-US**

\CROSSOVER SUSPENSION CLAMP FOR 1/4" TO 3/8" STRAND

**HCR-AG-US**