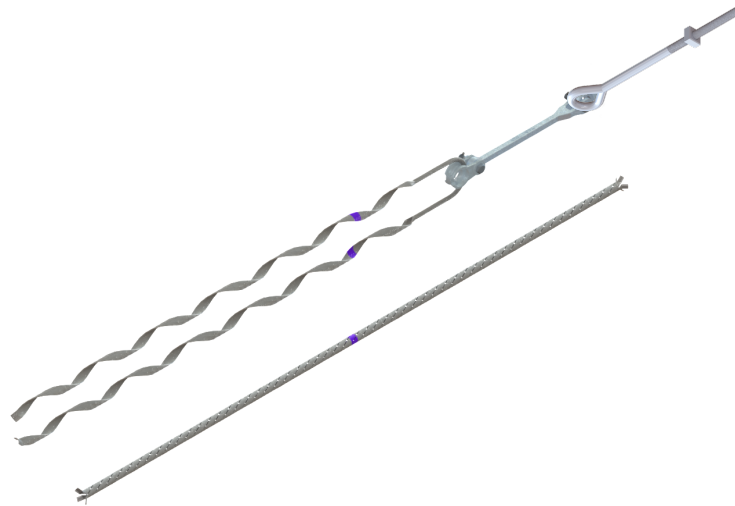


DEAD ENDS

ADSS TENSION HARDWARE FOR LONG SPANS



HTXXPADSS-XX.X-XX.X-XXX

Note: Illustrative images

\ GENERAL

\ DESCRIPTION

AERIALGRIP ® ADSS Tension Hardware offers the most adequate system terminating All Dielectric Self-Supporting cable by evenly distributing compressive forces and transferring axial tensile loads without damaging the cable jacket or the optical fibers. The assembly also provides support against vibrations and oscillations caused by wind. The dead-ends are treated with an aluminum oxide coating which provides optimal grip on the cable without damaging its plastic jacket.

\ FEATURES

- Excellent holding capacity thanks to its mineral salts that increase the abrasion between the preformed and the cable.
- Available in different sizes depending on the used cable diameter
- Available for up to 500m (1640 ft) span lengths
- Excellent weather resistance
- Manufactured with hot dipped galvanized steel compliant with ASTM A153
- Easy and secure installation. No special installation tools required. Its correct installation can be verified visually, saving time and labor.



www.aerialgrip.com

info@aerialgrip.com

Revision Jun 25, 2021 \ 1

\ APPLICATION

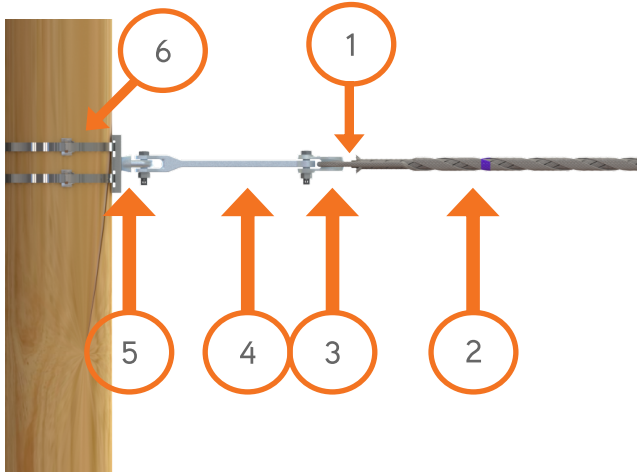


Fig 1. HTSF2PADSS-XX.X-XX.X-300 ADSS Tension hardware with oval eye banding bracket application diagram

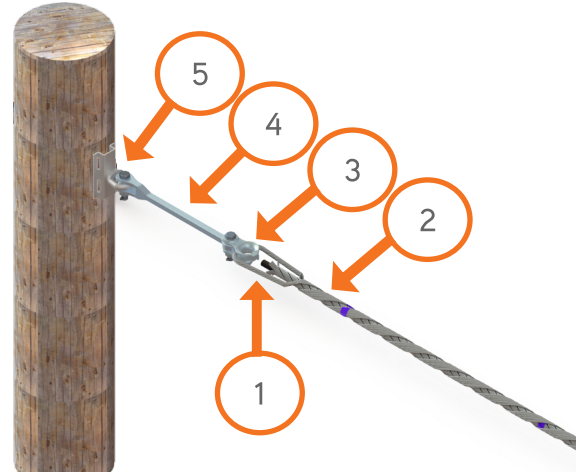


Fig 2. HTSO2PADSS-XX.X-XX.X-300 ADSS Tension hardware with oval eye bolt bracket application diagram

\ ASSEMBLY HARDWARE

	CODE	DESCRIPTION
1)	HPXXXX-XX.X-XX.X	DEAD-END FOR ADSS CABLE
2)	EPXXXX-XX.X-XX.X	DEAD-END SPLICE FOR ADSS CABLE
3)	HGTC-XX-P	PRELOADED THIMBLE CLEVIS
4)	HET-70-P	PRELOADED 70KN EXTENSION LINK
5)	HSP-300-X-X/X	OVAL EYE BANDING BRACKET
6)	HF-X/X-30 / HB-XX-100	STRAP AND BUCKLE*

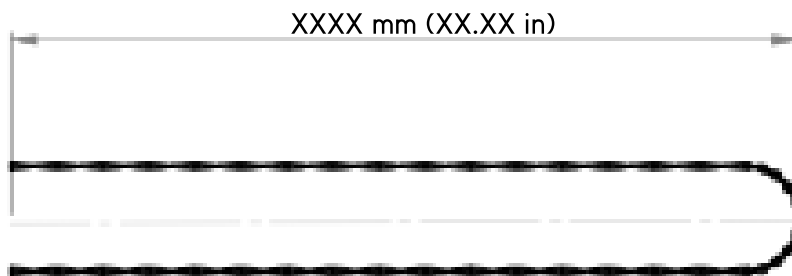
Notes: *Strap and buckle sold separately

	CODE	DESCRIPTION
1)	HPXXXX-XX.X-XX.X	DEAD-END FOR ADSS CABLE
2)	EPXXXX-XX.X-XX.X	DEAD-END SPLICE FOR ADSS CABLE
3)	HGTC-XX-P	PRELOADED THIMBLE CLEVIS
4)	HET-70-P	PRELOADED 70KN EXTENSION LINK
5)	HSX-XX / HSX-XXX-X-X/X	EYE NUT BRACKET WITH 15" BOLT*

Notes: *Bolt not shown in application diagram

\ DIMENSIONS

\ HPXXXX-XX.X-XX.X DEAD-END FOR ADSS



SPAN	DEAD-END LENGTH
400M (1312.34 FT)	1500MM (59.05 IN) DEAD-END
500M (1640.42 FT)	1700MM (66.92 IN) DEAD-END

\ EPXXXX-XX.X-XX.X DEAD-END SPLICE FOR ADSS

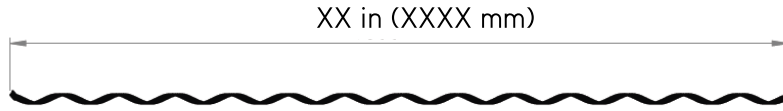


Fig 3 dead-end splice side view

SPAN	DEAD-END SPLICE LENGTH
400M (984.25 FT)	1800MM (70.86 IN)
500M (1640.42 FT)	2000MM (78.74 IN)

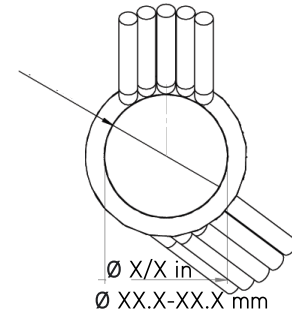
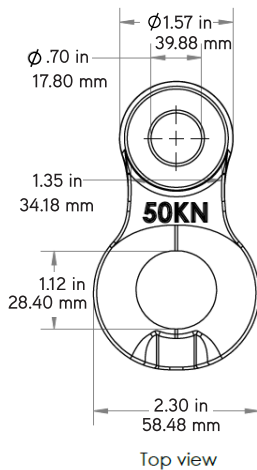


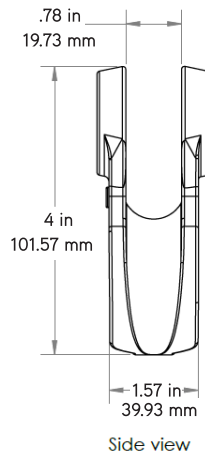
Fig 4 Dead-end splice front view

Note: For additional dead-end technical specifications consult our "dead-end for adss" and "dead-end splice for adss" data sheets or contact a sales representative at info@aerialgrip.com

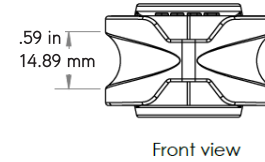
\ HGTC-50-P PRELOADED THIMBLE CLEVIS



Top view



Side view

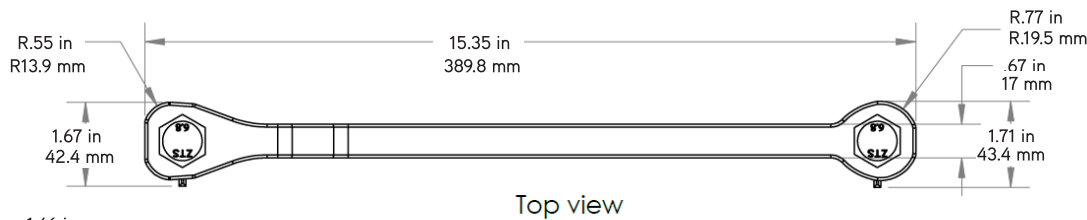


Front view

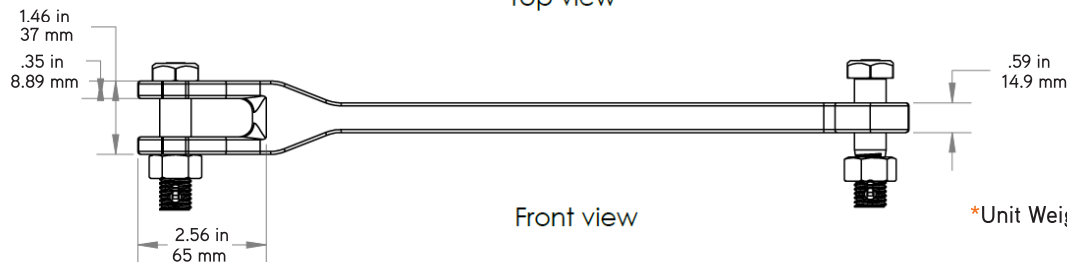
*Unit Weight.
HGTC-50-P: 1.24 lb (565 g)

Notes:
HGTC-50-P and HET-70-P include 1 set of hardware each (bolt, nut, and cotter pin)

\ HET-70-P PRELOADED EXTENSION LINK



Top view



Front view

*Unit Weight: 1.14 lb (520 g)

\ HSP0-XXX BOLT BRACKETS

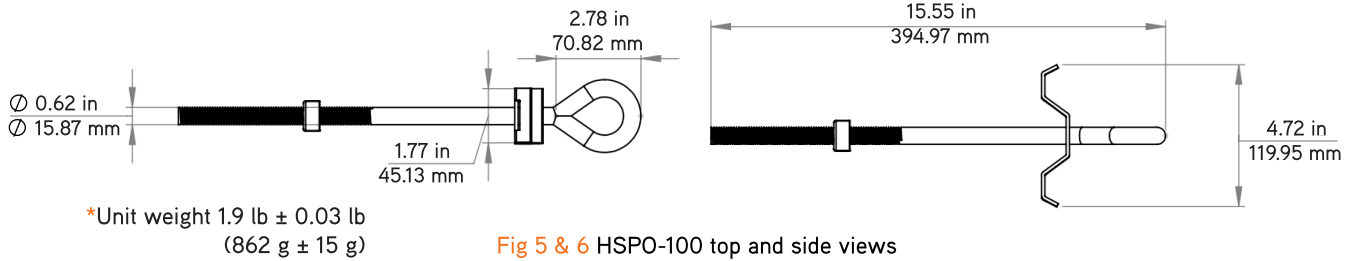


Fig 5 & 6 HSP0-100 top and side views

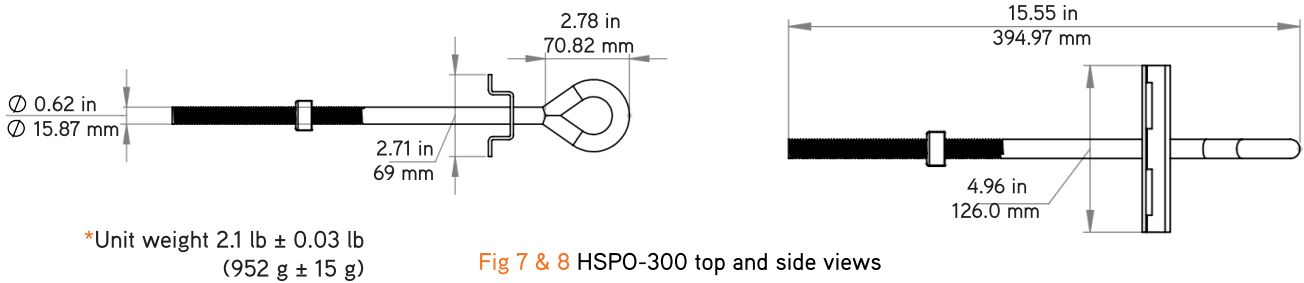


Fig 7 & 8 HSP0-300 top and side views

\ AERIALGRIP HSPB-XXX BOLT BRACKETS

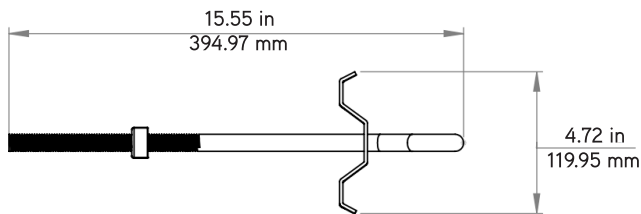


Fig 9 HSPB-100 side view

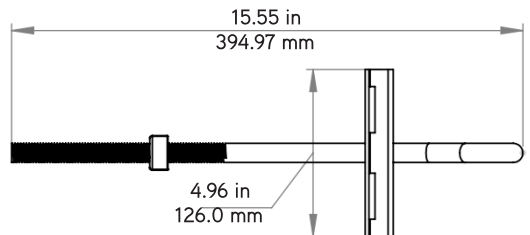
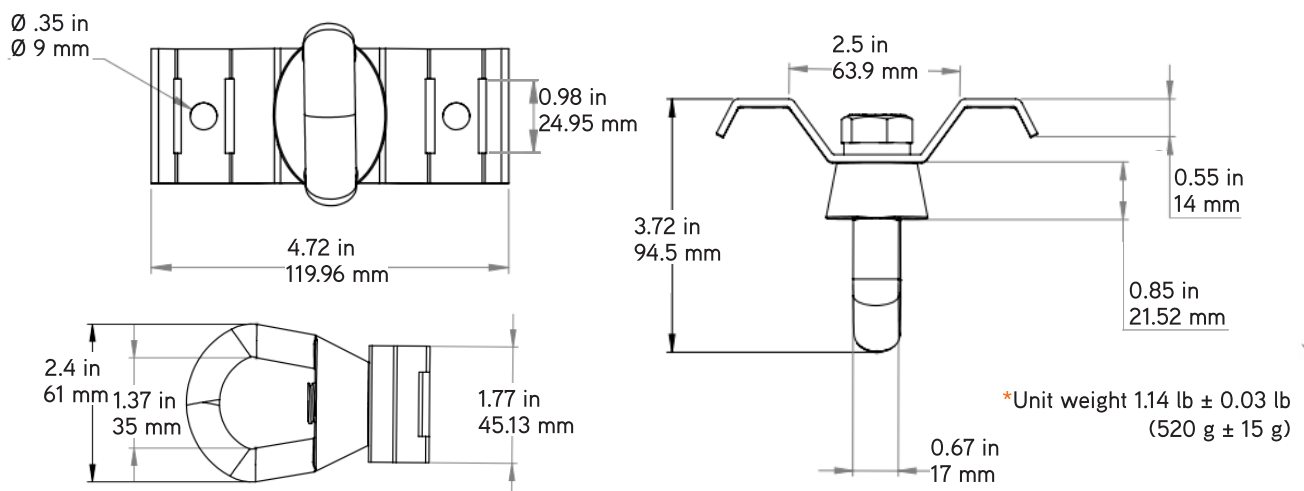


Fig 10 HSPB-300 side view

\ HSP-300-X-X/X SINGLE AND DOUBLE BAND EYE NUT BRACKET



\ PACKAGING

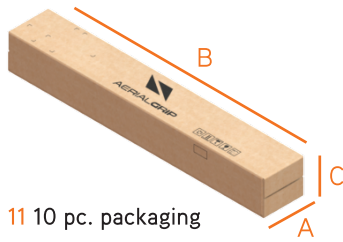


Fig. 11 10 pc. packaging

	A (in)/(mm)	B (in)/(mm)	C (in)/(mm)
Box A	9.84/250	68.89/1750	8.26/210
Box B	9.84/250	80.2/2037	8.26/210

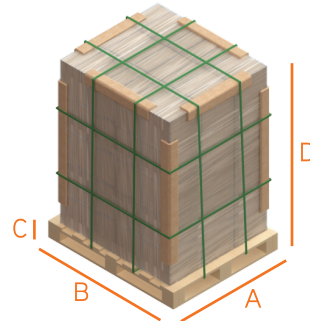


Fig. 12 Vertical Packaging. 20 box pallet
(573.2 - 870.8 lb / 260 - 395 kg)

	A (in)/(mm)	B (in)/(mm)	C (in)/(mm)	D (in)/(mm)
Pallet A	48/1219.2	40/1016	5.37/136.53	64.4/1637

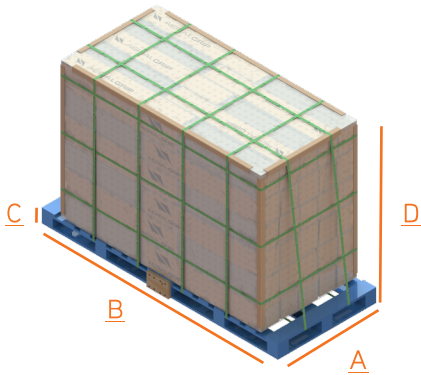


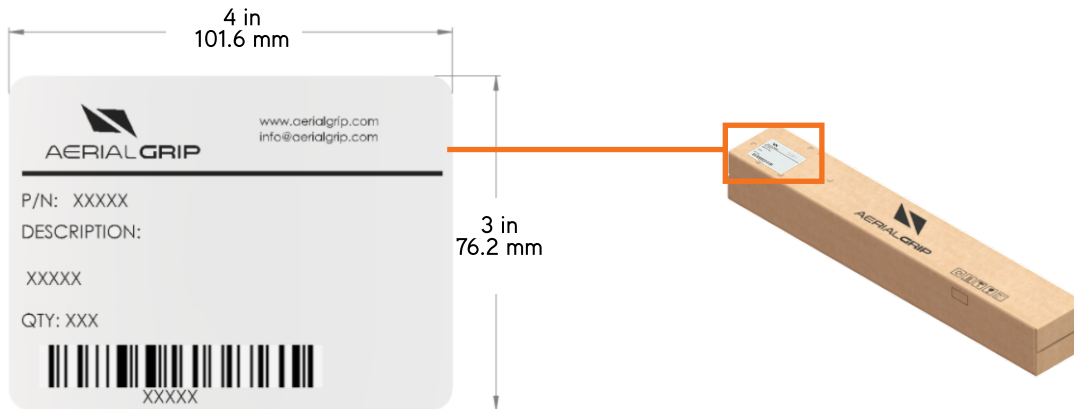
Fig. 7 Horizontal Packaging. 20 box pallet
(1168.4-1576.3 lb / 530-715 kg)*

	A (in)/(mm)	B (in)/(mm)	C (in)/(mm)	D (in)/(mm)
Pallet B	44.1/1120	80.31/2040	5.37/136.53	40.5/1028.5

Notes: *Boxes and pallet weight included. (200 pcs. total)

Note: Illustrative images

\ LABELING SPECIFICATIONS



Note: Illustrative images

\ ORDERING MATRIX

