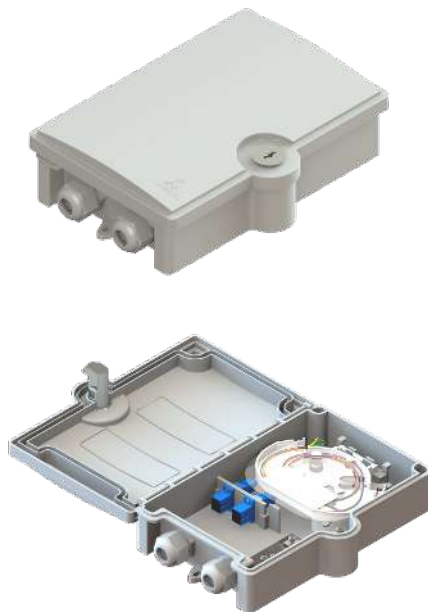


2 PORT FIBER OPTIC PRO TERMINAL BOX

FWB-02P
TERMINAL BOX

The MEXFOSERV® Fiber Optic Terminal Boxes, also known as Network Interface Device (NID) are typically used as a transition point where the OSP cable is spliced to an indoor cable. This UV resistance housing is designed for wall mount applications to provide protection for fiber optic connections and splices in indoor and outdoor environments.

MEXFOSERV® offers multiple pre-assembled terminal box options for compact fiber management on FTTX installations. It integrates fiber splicing, splitting, distribution, storage in one unit allowing the cables to be crossed and connected in a variety of ways. In addition, the Fiber Optic Terminal Box protects the fiber and provides good properties against dust & moisture.



2 Port Fiber Optic Pro Terminal Box

APPLICATIONS

- Telecommunication
- Data transfer
- LAN/WAN
- Indoor applications
- FTTX

GENERAL CHARACTERISTICS

- Outdoor wall mounting
- SC & LC adapters compatible
- Integrated lock opens with a flat-faced screwdriver
- Outdoor resistance
- PLC Splitter compatible
- Outdoor/ Indoor cable compatible
- Wall mounting

STANDARDS

- IP 65 rating
- IK 7 Impact
- GR-2898 6.3.1 Cable Clamping
- GR-2898 6.3.5 Vertical Drop
- GR-2898 6.3.6 Compression
- GR-2898 6.4.1 Thermal Aging
- GR-2898 6.4.2 Assembly
- GR-2898 6.4.5 Water Resistance Tests

Note: Images for reference only



SPECIFICATIONS

SPECIFICATIONS	
Maximum Capacity	2 Adapters
Type of Adapters	Simplex SC & Duplex LC
Cable diameter acceptance	8.0 mm x 4.5mm flat drop cable and 3mm to 10mm round cable
Sleeves Capacity in Splice Tray	4 Sleeves
Dimensions	8.11 x 5.97 x 1.98" (206 x 151.70 x 50.31mm)
Material	ABS + PC
Polished Types	UPC & APC
Resistance	IP65 Resistance
Weight	1.08 pounds (490 gr)

Internal Structure	
#	Piece
1	Splice Tray
2	Routing Space
3	Cable Clamp
4	Principal Base
5	Cable Gland Clamp
6	Adapter Port
7	Lock
8	Cover
9	Sealing Gasket

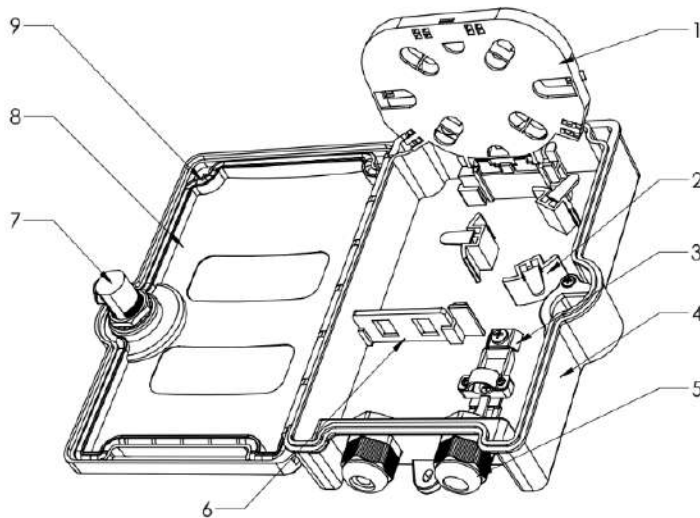





Fig. 1 Empty Terminal Box



INCLUDED COMPONENTS					
EMPTY FWB-02P 2 PORT FIBER OPTIC PRO TERMINAL BOX		FWBP-02P-XX-XXX-X-X 2 PORT FIBER OPTIC PRO TERMINAL BOX PRELOADED WITH ADAPTERS		FWBP-02P-XX-XXX-X-X 2 PORT FIBER OPTIC PRO TERMINAL BOX PRELOADED WITH ADAPTERS & PIGTAILS	
1 pc	Transition tube	1 pc	Transition tube	1 pc	Transition tube
10 pcs	Plastic cable ties	10 pcs	Plastic cable ties	10 pcs	Plastic cable ties
3 pcs	Screws	3 pcs	Screws	3 pcs	Screws
3 pcs	Wall anchor	3 pcs	Wall anchor	3 pcs	Wall anchor
2 pcs	Dummy caps grommets	2 pcs	Dummy caps grommets	2 pcs	Dummy caps grommets
2 pcs	Cable gland clamps	2 pcs	Cable gland clamps	2 pcs	Cable gland clamps
40 mm splice sleeve with 1 mm steel guide according to cable density		1-2 pcs	Adapters according to configuration	1-2 pcs	Adapters according to configuration
		40 mm splice sleeve with 1 mm steel guide according to cable density		Pigtails according to configuration	
				40 mm splice sleeve with 1 mm steel guide according to cable density	
					
<p>Note:</p> <ul style="list-style-type: none"> * Installation tools not included. ** Illustrative pictures. 					



PACKAGING

PACKAGING SPECIFICATIONS				
PACKAGING	QUANTITY OF FWB-02P INTO A 9 x 6.3 x 2.16" (230 x 160 x 55mm) INDIVIDUAL BOX	QUANTITY OF INDIVIDUAL BOXES INTO A 11.8 x 9.84 x 9.84" (300 x 250 x 250mm FONCS02-M	WEIGHT OF EVERY FONCS02-M	
1	1 piece	Fit 8 individual boxes (8 pieces)	4.66 kg/10.27 lb	
PALLET SPECIFICATIONS				
1	QUANTITY OF FONCS02-M PER PALLET	DIMENSIONS OF PALLET INCLUDING 60 FONCS02-M	TOTAL QUANTITY OF FWB-02P PER PALLET	TOTAL WEIGHT
	60 FONCS02-M into a 48 x 40 x 5.37" (1219 x 1016 x 136.53mm) standard pallet	42.83 x 37 x 54.87" (1393.75 x 1088 x 942mm)	480 pieces per pallet	299.84 kg

1



Fig. 2 Individual Package



Fig. 8 FONCS02-M



Fig. 9 Pallet packaging

LABELING SPECIFICATION



Fig. 10 Individual packaging label



Fig. 11 FONCS02-M label



Note: Illustrative images

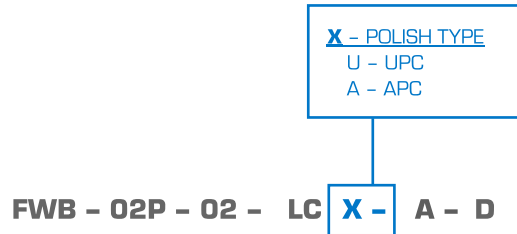


ORDERING MATRIX

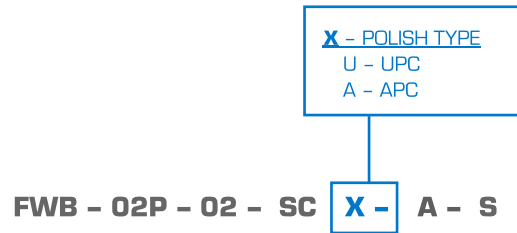
EMPTY 2 PORT FIBER OPTIC PRO TERMINAL BOX

FWB - 02P

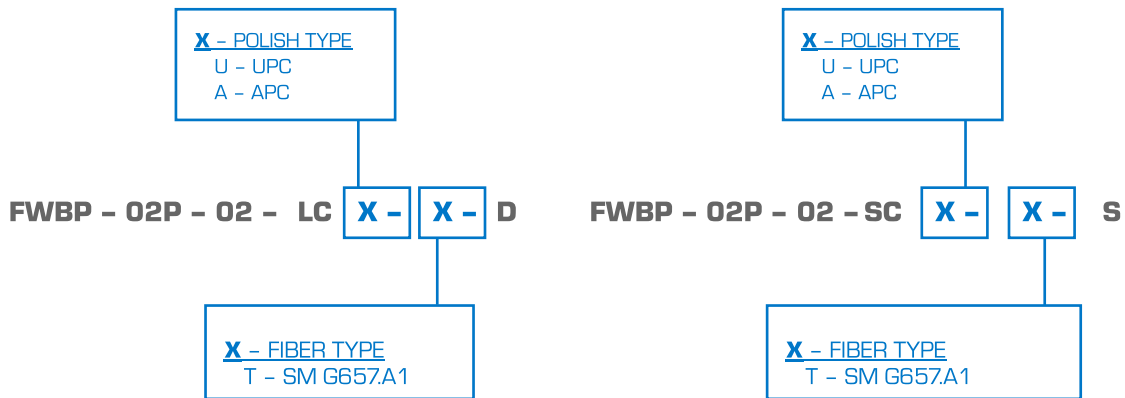
2 PORT FIBER OPTIC PRO TERMINAL BOX PRELOADED WITH TWO LC DUPLEX ADAPTER



2 PORT FIBER OPTIC PRO TERMINAL BOX PRELOADED WITH TWO SC SIMPLEX ADAPTERS



2 PORT FIBER OPTIC PRO TERMINAL BOX PRELOADED WITH ADAPTERS & PIGTAILS



Note: The quantity and polish of the 2 meters (6.5 ft) pigtails will be the same as the adapters configuration.

Note 1: The 2 PORT FIBER OPTIC PRO TERMINAL BOX can support 4 splice sleeves so there can be only two SC standard adapters or two duplex LC adapters.

Note 2: The configuration with preloaded pigtails will be differentiated with a P at the end of the first part of the configurable code (FWBP)

