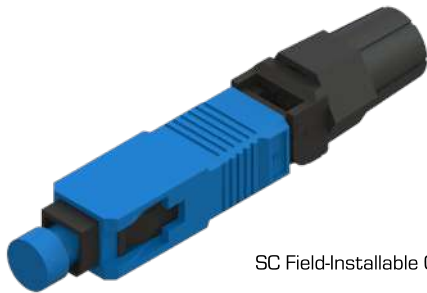


MECHANICAL FIELD-INSTALLABLE CONNECTORS

FCP-XXX-XXX-X-S FIELD-INSTALLABLE CONNECTORS

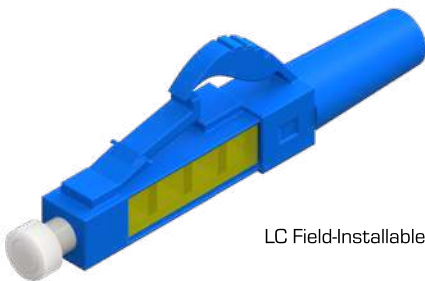
The MEXFOSERV® Mechanical Field-Installable Connectors are an excellent solution for fiber optic network termination, ensuring precision fiber alignment fully compatible with Single-mode & Multi-mode fibers, fiber termination is made fast, easy & reliable. No epoxy, no electricity or polishing required. Widely used in FTTx networks in a wide range of connectors.



SC Field-Installable Connector



ST Field-Installable Connector



LC Field-Installable Connector

APPLICATIONS

- LAN/WAN connections
- Equipment terminations
- Premise/enterprise networks
- Field repair/replacement
- FTTx applications
- Patch panels

GENERAL CHARACTERISTICS

- Fast & easy less than 2-minute field installation
- No epoxy, no polishing needed on site
- Low insertion loss
- Reliable and superior optical performance
- Fully mechanical joining system, no electricity required
- No fusion splicer required
- All primary fiber types are supported

STANDARDS

- GR-326-CORE
- TIA/EIA 568-C.3
- GR-1081
- UL 94 rating
- IEC 61300-3-35



MEXFOSERV® offers a large variety of mechanical field-installable connectors and assembly tools. If you don't see what you are looking for or have questions about our ordering matrix contained on this spec sheet please email us info@mexfoserv.com



SC & FTTx FIELD-INSTALLABLE CONNECTORS

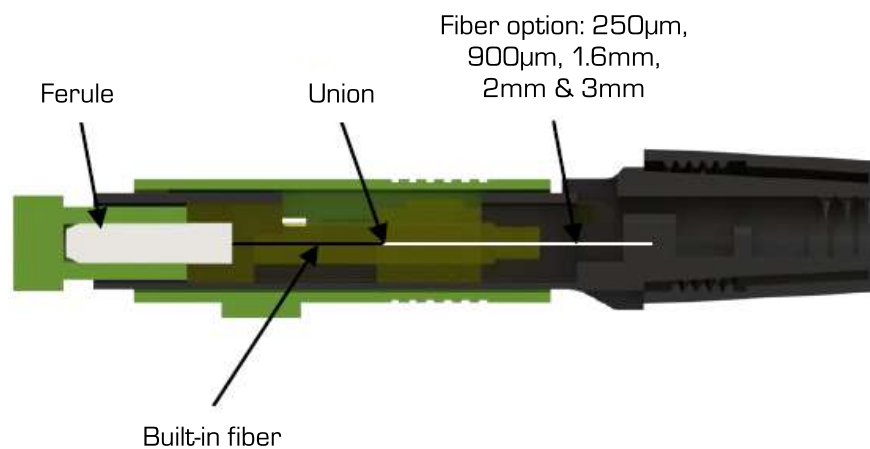
The MEXFOSERV® SC & FTTx Field-Installable Connectors are universal connectors for 250um to 3mm fibers that use expanding tubes to thicken the fiber & allow the connectorization.

LC & ST FIELD-INSTALLABLE CONNECTORS

The MEXFOSERV® LC & ST Field-Installable Connectors are universal connectors for 250um to 900um fibers in a model and 2mm to 3mm in the other. Using expanding tubes to thicken the fiber & allow the connectorization.

SPECIFICATIONS		
PARAMETER	SINGLE-MODE	MULTI-MODE
Insertion Loss (IL)	≤ 0.35 dB	≤ 0.5 dB
Return Loss (RL)	≥ -45 (UPC) ≥ -55 (APC)	≥ -35 dB
Operational temperature	-40°C ~ 75°C	

INNER MECHANICAL FIELD-INSTALLABLE CONNECTOR CONSTRUCTION



Note: Illustrative Images

Detailed SC Mechanical Field-Installable Connector





SM SC/UPC



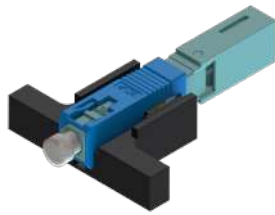
SM SC/APC



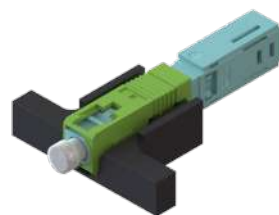
MM SC/PC
OM1 & OM2



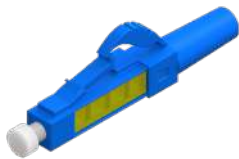
MM SC/PC
OM3 & OM4



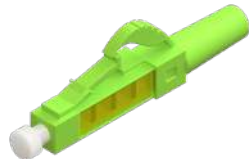
SM SC/UPC
FTTx



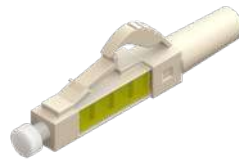
SM SC/APC
FTTx



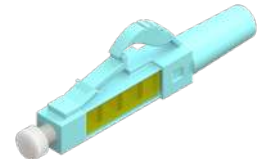
SM LC/UPC



SM LC/APC



MM LC/PC
OM1 & OM2



MM LC/PC
OM3 & OM4



SM ST/UPC



MM ST/PC
OM1 & OM2

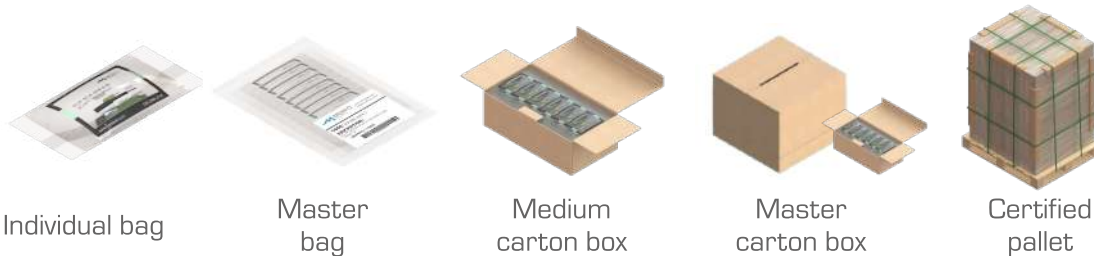


MM ST/PC
OM3 & OM4

Note: Illustrative images

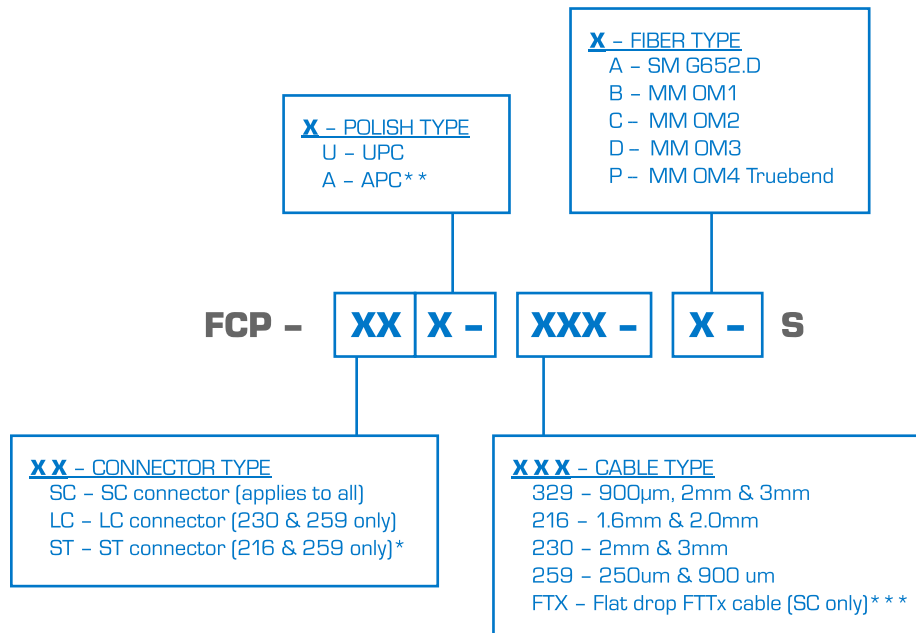


PACKAGING TYPE	
Individual	92.4x53.2mm [3.6x2.0"] transparent zipper bag for all connectors, only SC 329 goes inside a different bag of 120x73.5mm [4.7x2.6"] [3.5 gr].
10 Pieces	Individual bags inside a 177x127mm [7x5"] transparent zipper master bag [35 gr].
100 pieces	300x160x98mm [11.8x6.2x3.8"] medium carton box [450 gr].
Master box	30 medium sized boxes inside a 604x510x510mm [23.78x20.08x20.08"] master carton box [13.5 kg].
Pallet packaging	12 FONCS15-M carton boxes mounted a certified 1.2 x 1.0 m [48 x 40"] standard pallet [182 kg].



ORDERING MATRIX

MECHANICAL FIELD-INSTALLABLE CONNECTOR



Note: Simplex SC & LC Mechanical Field Installable Connectors can be converted to duplex connectors. Please contact your sales representative if you need help or if a special simplex-to-duplex clip is needed.

*ST Mechanical Field Installable Connectorss are unavailable in APC.

**The APC Multi-Mode Mechanical Field Installable Connectors is manufactured by special request because it is an unusual configuration.

*** FTTx cable-type Mechanical Field Installable Connectors are only available with SM fiber.

