



## Central Loose Tube

## All-Dielectric Cable Gel-Filled / PBT

## FOSPC-XX-X-SJADUT70-FT002-US / 1-12 Fibers

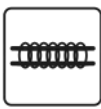
### Applications



Outdoor



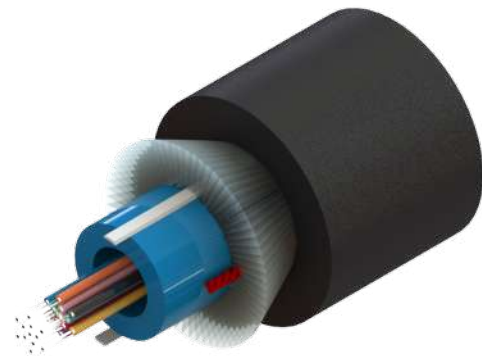
Duct Installation



Lashed



Air Blown Fiber



CENTRAL LOOSE TUBE CABLE 7.00 MM  
GEL-FILLED 12F G652.D FIBER FT

### Protections



UV Resistant



Water Blocking

### Description

Central Loose tube all-dielectric cables gel-filled are the most commonly-deployed outdoor cables, because of its price and its installation flexibility, since these cables can be installed both in aerial (lashed) installations as well as in ducts through the following techniques: air-blown, jetted or pulled into a duct.

Single loose tube made of PBT which provides great mechanical properties under a wide range of conditions such as crush test and impact test, and is filled with water blocking gel.

PE single jacket with additives makes a resistant, durable and easy to strip cable, providing superior protection against UV radiation, fungus, abrasion and other environmental factors.

Two ripcords ensure a quick fiber access.

The cable contains glass yarn that helps increase tensile strength.

### Quality

Waveoptics® is a ISO-9001:2015 certified company.

We meet or exceed the following international standards:

- Telcordia GR-20: Generic requirements for optical fiber and optical fiber cable.
- IEC 60794: Basic requirements for optical fiber and cable elements.
- ANSI/ICEA S-87-640: Standard for optical dfdfslmdmsds outside plant communications cable.

Each Waveoptics® cable meets the highest quality standards in the industry and contains a compliance certificate in which the performed tests in our quality laboratory are physically attached.

Folio PE-430-01-EN

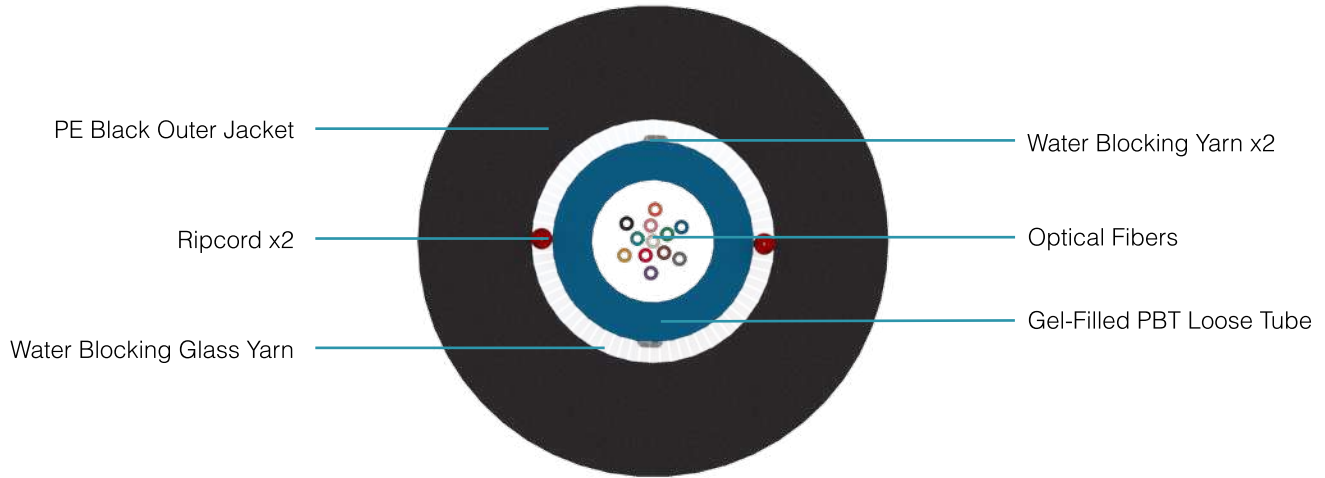
Last Review 10/18/2023


# TECHNICAL DATA SHEET

## OUTDOOR CABLE

FOSPC-XX-X-SJADUT70-FT002-US/ 1-12 Fibers

### Dimensions & Properties



Design	
Fiber per Tube	1 - 12
Fiber Color Code / Loose tube Color Code	
Strength Member	Water Blocking Glass Yarn
Outer Jacket Material / Thickness	MDPE / 1.9 mm (0.06 in)
Loose Tube Material / Diameter	PBT / 3.0 mm (0.12 in)
Drum Length	10,000 ft (±5%)
Temperature Range	
Operation	-40°C to 70°C (-40° F to 158° F)
Installation	-30°C to 70°C (-22° F to 158° F)
Storage / Transport	-40°C to 70°C (-40° F to 158° F)
Mechanical Properties	
Crush Resistance (Short-term / long-term)	2,200 N/ 100 mm / 1,100 N/ 100 mm
Minimum Bend Radius (Operation / installation)	10 x OD / 20 x OD

Note: Waveoptics® recommends storing cable in a proper temperature environment prior to installation to allow the cable temperature to meet installation temperature range specifications for best installation results.

# TECHNICAL DATA SHEET OUTDOOR CABLE

FOSPC-XX-X-SJADUT70-FT002-US/ 1-12 Fibers

## Dimensions & Properties

Fiber count	Cable weight (kg/km) (lb/kft) ( $\pm 10\%$ )	Tensile strength (N) (lbf) long-term / short-term	Nominal outer diameter (mm) (in) ( $\pm 5\%$ )
1	47 (32)	445 / 1,335 (100 / 300)	7 (0.28)
6			
8			
12			

## Printed Information on Outer Jacket

=/MONTH//YEAR/WAVEOPTICS OPTICAL CABLE ==SJAD== UT == 70 ==  ==/FIBER TYPE/= /FIBER COUNT/= /FEET\*/FT== /LOT#/=

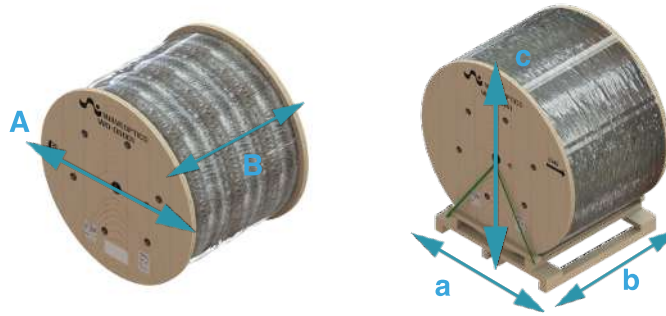
- Printed in white and resistant to physical tests on marking
- Marking interval: every 2 feet + 1%
- The marking can be changed according to customer requirements

# TECHNICAL DATA SHEET

## OUTDOOR CABLE

FOSPC-XX-X-SJADUT70-FT002-US/ 1-12 Fibers

### Drum Dimensions and Pallet Packaging Information



Drum length (ft) (m) (±5%)	Fiber Count	A (mm) (in) (± 5%)	B (mm) (in) (± 5%)	Drum and Pallet Total weight (kg) (lb) (± 10%)	Total Packaging(± 5%)		
					a (mm) (in)	b (mm) (in)	c (mm) (in)
10,000 (3,048)	1-12	900 (35)	930 (37)	250 (551)	965 (38)	1,067 (42)	1,021 (40)

Note 1: Please contact your sales agent for higher fiber counts or different drum lengths available.

Note 2: All documentation included in each drum of cable is in english, if a different language is needed, please contact your sales agent.

**All drums include:\***

1. Drum handling instructions
2. Test report certificate
3. Product description (weight, dimensions, lot and part number)
4. End cable marking
5. Both ends include end caps to protect against humidity

# TECHNICAL DATA SHEET OUTDOOR CABLE

FOSPC-XX-X-SJADUT70-FT002-US / 1-12 Fibers

## Transmission Performance by Fiber Type

Fiber Type	Single Mode			
Waveoptics® Fiber Type	G652.D	G657.A1	G657.A2	G655.C
Waveoptics® Fiber Code	F	T	E	G
OFS® Fiber Type	G652.D	-	-	-
OFS® Fiber Code	1	2	-	-
Wavelength (nm)	1310/1550			1550/1625
Max.attn. (dB/km) (1)	0.36/0.25	0.36/0.25	0.35/0.25	0.25/0.27
Min. bandwidth (MHz*km) (2)	-			
1-Gigabit ethernet distance (m) (3)	-			
10-Gigabit ethernet distance (m) (4)	-			
40/100-Gigabit ethernet distance (m) (5)	-			
Cable Marking Specifications	G652.D	G657.A1	G657.A2	G655.C

Notes:  
(1) Maximum attenuation after cabling process.

## Part Number Configuration

# FOSPC-XX-X-SJADUT70-FT002-US

Fiber Count	Waveoptics® Fiber Type	OFS® Fiber Type	Optical Cable Compliance
01 - 1 Fiber 02 - 2 Fibers 04 - 4 Fibers 06 - 6 Fibers 08 - 8 Fibers 12 - 12 Fibers	F - SM G652.D T - SM G657.A1	1 - SM G652.D	US - Waveoptics® Standard

Note: please contact your Waveoptics® distributor if you need any additional compliance or if you have questions about the part number configuration.

Folio PE-430-01-EN

Last Review 10/18/2023

[www.waveoptics.net](http://www.waveoptics.net)

[info@waveoptics.net](mailto:info@waveoptics.net)